

## ARG66734 anti-INTS5 antibody

Package: 100 µl  
Store at: -20°C

### Summary

Product Description	Rabbit Polyclonal antibody recognizes INTS5
Tested Reactivity	Hu, Ms
Tested Application	IHC-P, WB
Host	Rabbit
Clonality	Polyclonal
Isotype	IgG
Target Name	INTS5
Species	Human
Immunogen	Recombinant full length protein of Human INTS5.
Conjugation	Un-conjugated
Alternate Names	INT5; KIAA1698; Integrator complex subunit 5; Int5

### Application Instructions

Application table	Application	Dilution
	IHC-P	1:50 - 1:200
	WB	1:500 - 1:2000
Application Note	IHC-P: Antigen Retrieval: Heat mediation was performed in Sodium citrate buffer (pH 6.0). * The dilutions indicate recommended starting dilutions and the optimal dilutions or concentrations should be determined by the scientist.	
Positive Control	MCF7, HT29 and Mouse liver	
Observed Size	~ 120 kDa	

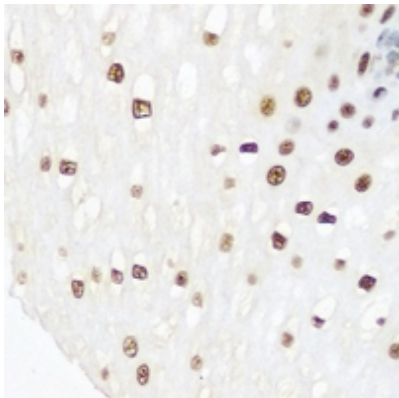
### Properties

Form	Liquid
Purification	Affinity purification with immunogen.
Buffer	0.42% Potassium phosphate (pH 7.3), 0.87% NaCl, 0.01% Sodium azide and 30% Glycerol.
Preservative	0.01% Sodium azide
Stabilizer	30% Glycerol
Storage instruction	For continuous use, store undiluted antibody at 2-8°C for up to a week. For long-term storage, aliquot and store at -20°C. Storage in frost free freezers is not recommended. Avoid repeated freeze/thaw cycles. Suggest spin the vial prior to opening. The antibody solution should be gently mixed before use.
Note	For laboratory research only, not for drug, diagnostic or other use.

Bioinformation

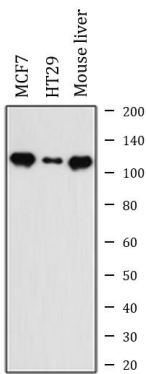
Gene Symbol	INTS5
Gene Full Name	integrator complex subunit 5
Background	The Integrator complex is a complex that associates with the C-terminal domain of RNA polymerase II large subunit. This complex is brought to U1 and U2 small nuclear RNA genes, where it is involved in the transcription and processing of their transcripts. The protein encoded by this gene represents a subunit of the Integrator complex. [provided by RefSeq, Aug 2016]
Function	Component of the Integrator (INT) complex, a complex involved in the small nuclear RNAs (snRNA) U1 and U2 transcription and in their 3'-box-dependent processing. The Integrator complex is associated with the C-terminal domain (CTD) of RNA polymerase II largest subunit (POLR2A) and is recruited to the U1 and U2 snRNAs genes (Probable). Mediates recruitment of cytoplasmic dynein to the nuclear envelope, probably as component of the INT complex (PubMed:23904267). [UniProt]
Calculated Mw	108 kDa
Cellular Localization	Nucleus membrane; Multi-pass membrane protein. Nucleus. Cytoplasm. [UniProt]

Images



**ARG66734 anti-INTS5 antibody IHC-P image**

Immunohistochemistry: Formalin-fixed and paraffin-embedded Human esophageal cancer tissue section. Antigen Retrieval: Heat mediation was performed in Sodium citrate buffer (pH 6.0). The section was stained with ARG66734 anti-INTS5 antibody at room temperature. The section was counterstained with haematoxylin and mounted with DPX.



**ARG66734 anti-INTS5 antibody WB image**

Western blot: MCF7, HT29 and Mouse liver whole cell lysates stained with ARG66734 anti-INTS5 antibody.