

ARG66794 anti-RASSF2 antibody

Package: 100 µl
Store at: -20°C

Summary

Product Description	Rabbit Polyclonal antibody recognizes RASSF2
Tested Reactivity	Ms, Rat
Tested Application	WB
Host	Rabbit
Clonality	Polyclonal
Isotype	IgG
Target Name	RASSF2
Species	Human
Immunogen	KLH-conjugated synthetic peptide within the center region of Human RASSF2.
Conjugation	Un-conjugated
Alternate Names	CENP-34; Ras association domain-containing protein 2; RASFADIN

Application Instructions

Application table	Application	Dilution
	WB	1:500 - 1:1000
Application Note	* The dilutions indicate recommended starting dilutions and the optimal dilutions or concentrations should be determined by the scientist.	
Positive Control	Mouse lung, Mouse liver and Rat liver	
Observed Size	~ 42 kDa	

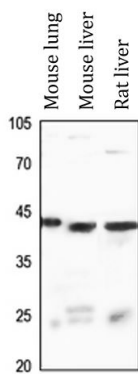
Properties

Form	Liquid
Purification	Affinity purification with immunogen.
Buffer	0.42% Potassium phosphate (pH 7.3), 0.87% NaCl, 0.01% Sodium azide and 30% Glycerol.
Preservative	0.01% Sodium azide
Stabilizer	30% Glycerol
Storage instruction	For continuous use, store undiluted antibody at 2-8°C for up to a week. For long-term storage, aliquot and store at -20°C. Storage in frost free freezers is not recommended. Avoid repeated freeze/thaw cycles. Suggest spin the vial prior to opening. The antibody solution should be gently mixed before use.
Note	For laboratory research only, not for drug, diagnostic or other use.

Bioinformation

Gene Symbol	RASSF2
Gene Full Name	Ras association (RalGDS/AF-6) domain family member 2
Background	This gene encodes a protein that contains a Ras association domain. Similar to its cattle and sheep counterparts, this gene is located near the prion gene. Two alternatively spliced transcripts encoding the same isoform have been reported. [provided by RefSeq, Jul 2008]
Function	Potential tumor suppressor. Acts as a KRAS-specific effector protein. May promote apoptosis and cell cycle arrest. Stabilizes STK3/MST2 by protecting it from proteasomal degradation. [UniProt]
Calculated Mw	38 kDa
PTM	Phosphorylated by STK3/MST2 and STK4/MST1. [UniProt]
Cellular Localization	Nucleus. Cytoplasm. Chromosome, centromere, kinetochore. Note=Translocates to the cytoplasm in the presence of STK3/MST2 AND STK4/MST1. [UniProt]

Images



ARG66794 anti-RASSF2 antibody WB image

Western blot: Mouse lung, Mouse liver and Rat liver whole cell lysates stained with ARG66794 anti-RASSF2 antibody.