

ARG66808 anti-CD38 antibody [SQab20221]

Package: 100 µl
Store at: -20°C

Summary

Product Description	Recombinant Rabbit Monoclonal antibody [SQab20221] recognizes CD38
Tested Reactivity	Hu
Tested Application	IHC-P
Host	Rabbit
Clonality	Monoclonal
Clone	SQab20221
Isotype	IgG
Target Name	CD38
Species	Human
Immunogen	Synthetic peptide within aa. 200-300 of Human CD38.
Conjugation	Un-conjugated
Alternate Names	cADPr hydrolase 1; ADPRC 1; EC 3.2.2.6; 2'-phospho-ADP-ribosyl cyclase/2'-phospho-cyclic-ADP-ribose transferase; Cyclic ADP-ribose hydrolase 1; ADPRC1; EC 2.4.99.20; ADP-ribosyl cyclase 1; 2'-phospho-cyclic-ADP-ribose transferase; CD antigen CD38; T10; 2'-phospho-ADP-ribosyl cyclase; ADP-ribosyl cyclase/cyclic ADP-ribose hydrolase 1

Application Instructions

Application table	Application	Dilution
	IHC-P	1:100 - 1:200

Application Note

IHC-P: Antigen Retrieval: Heat mediation was performed in Tris/EDTA buffer (pH 9.0), primary antibody incubate at RT (18°C - 25°C) for 30 minutes.

* The dilutions indicate recommended starting dilutions and the optimal dilutions or concentrations should be determined by the scientist.

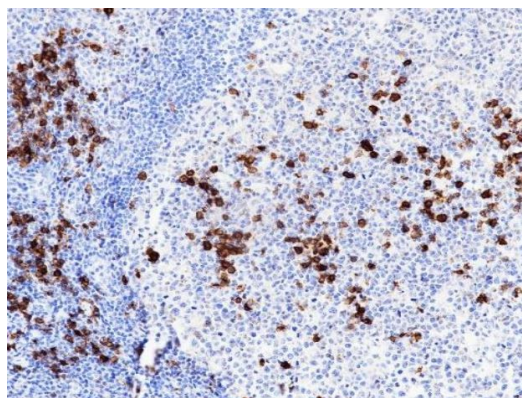
Properties

Form	Liquid
Purification	Purification with Protein A.
Buffer	PBS, 0.01% Sodium azide, 40% Glycerol and 0.05% BSA.
Preservative	0.01% Sodium azide
Stabilizer	40% Glycerol and 0.05% BSA
Storage instruction	For continuous use, store undiluted antibody at 2-8°C for up to a week. For long-term storage, aliquot and store at -20°C. Storage in frost free freezers is not recommended. Avoid repeated freeze/thaw cycles. Suggest spin the vial prior to opening. The antibody solution should be gently mixed before use.
Note	For laboratory research only, not for drug, diagnostic or other use.

Bioinformation

Gene Symbol	CD38
Gene Full Name	CD38 molecule
Background	<p>The protein encoded by this gene is a non-lineage-restricted, type II transmembrane glycoprotein that synthesizes and hydrolyzes cyclic adenosine 5'-diphosphate-ribose, an intracellular calcium ion mobilizing messenger. The release of soluble protein and the ability of membrane-bound protein to become internalized indicate both extracellular and intracellular functions for the protein. This protein has an N-terminal cytoplasmic tail, a single membrane-spanning domain, and a C-terminal extracellular region with four N-glycosylation sites. Crystal structure analysis demonstrates that the functional molecule is a dimer, with the central portion containing the catalytic site. It is used as a prognostic marker for patients with chronic lymphocytic leukemia. Alternative splicing results in multiple transcript variants. [provided by RefSeq, Sep 2015]</p>
Function	<p>Synthesizes the second messengers cyclic ADP-ribose and nicotinate-adenine dinucleotide phosphate, the former a second messenger for glucose-induced insulin secretion. Also has cADPr hydrolase activity. Also moonlights as a receptor in cells of the immune system. [UniProt]</p>
Highlight	<p>Related news: MyD88 L265P antibody for lymphoma research;</p>
Calculated Mw	34 kDa
Cellular Localization	Membrane; Single-pass type II membrane protein. [UniProt]

Images



ARG66808 anti-CD38 antibody [SQab20221] IHC-P image

Immunohistochemistry: Formalin/PFA-fixed and paraffin-embedded Human tonsil tissue. Antigen Retrieval: Heat mediation was performed in Tris/EDTA buffer (pH 9.0). The tissue section was stained with ARG66808 anti-CD38 antibody [SQab20221].