

ARG66809 anti-CD66e / CEA antibody [SQab20222]

Package: 100 µl
Store at: -20°C

Summary

Product Description	Recombinant Rabbit Monoclonal antibody [SQab20222] recognizes CD66e / CEA
Tested Reactivity	Hu
Tested Application	IHC-P, WB
Host	Rabbit
Clonality	Monoclonal
Clone	SQab20222
Isotype	IgG
Target Name	CD66e / CEA
Species	Human
Immunogen	Full length Human CD66e / CEA protein.
Conjugation	Un-conjugated
Alternate Names	Carcinoembryonic antigen-related cell adhesion molecule 5; CEA; CD66e; CD antigen CD66e; Carcinoembryonic antigen; Meconium antigen 100

Application Instructions

Application table	Application	Dilution
	IHC-P	1:100 - 1:200
	WB	1:500 - 1:2000
Application Note	IHC-P: Antigen Retrieval: Heat mediation was performed in Tris/EDTA buffer (pH 9.0), primary antibody incubate at RT (18°C - 25°C) for 30 minutes. * The dilutions indicate recommended starting dilutions and the optimal dilutions or concentrations should be determined by the scientist.	
Observed Size	180 - 200 kDa	

Properties

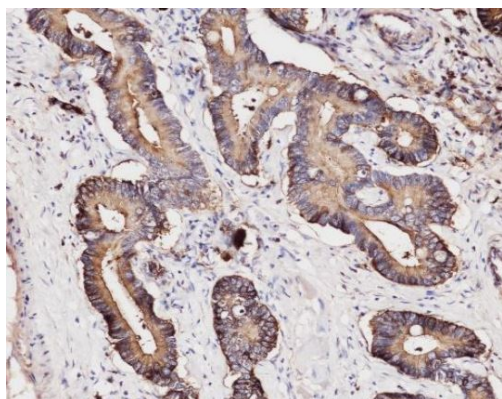
Form	Liquid
Purification	Purification with Protein A.
Buffer	PBS, 0.01% Sodium azide, 40% Glycerol and 0.05% BSA.
Preservative	0.01% Sodium azide
Stabilizer	40% Glycerol and 0.05% BSA
Storage instruction	For continuous use, store undiluted antibody at 2-8°C for up to a week. For long-term storage, aliquot and store at -20°C. Storage in frost free freezers is not recommended. Avoid repeated freeze/thaw cycles. Suggest spin the vial prior to opening. The antibody solution should be gently mixed before use.

Note For laboratory research only, not for drug, diagnostic or other use.

Bioinformation

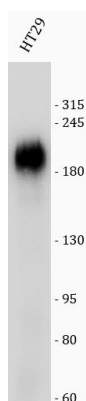
Gene Symbol	CEACAM5
Gene Full Name	carcinoembryonic antigen-related cell adhesion molecule 5
Background	This gene encodes a cell surface glycoprotein that represents the founding member of the carcinoembryonic antigen (CEA) family of proteins. The encoded protein is used as a clinical biomarker for gastrointestinal cancers and may promote tumor development through its role as a cell adhesion molecule. Additionally, the encoded protein may regulate differentiation, apoptosis, and cell polarity. This gene is present in a CEA family gene cluster on chromosome 19. Alternative splicing results in multiple transcript variants. [provided by RefSeq, Jul 2015]
Function	<p>Cell surface glycoprotein that plays a role in cell adhesion, intracellular signaling and tumor progression (PubMed:2803308, PubMed:10910050, PubMed:10864933). Mediates homophilic and heterophilic cell adhesion with other carcinoembryonic antigen-related cell adhesion molecules, such as CEACAM6 (PubMed:2803308). Plays a role as an oncogene by promoting tumor progression; induces resistance to anoikis of colorectal carcinoma cells (PubMed:10910050).</p> <p>(Microbial infection) Receptor for E.coli Dr adhesins. Binding of E.coli Dr adhesins leads to dissociation of the homodimer. [UniProt]</p>
Calculated Mw	77 kDa
PTM	Complex immunoreactive glycoprotein with a MW of 180 kDa comprising 60% carbohydrate. [UniProt]
Cellular Localization	Cell membrane; Lipid-anchor, GPI-anchor. [UniProt]

Images



ARG66809 anti-CD66e / CEA antibody [SQab20222] IHC-P image

Immunohistochemistry: Formalin/PFA-fixed and paraffin-embedded Human colon carcinoma tissue. Antigen Retrieval: Heat mediation was performed in Tris/EDTA buffer (pH 9.0). The tissue section was stained with ARG66809 anti-CD66e / CEA antibody [SQab20222].



ARG66809 anti-CD66e / CEA antibody [SQab20222] WB image (Customer review)

Western blot: HT29 stained with ARG66809 anti-CD66e / CEA antibody [SQab20222] at 1:500 dilution.