

ARG66852 anti-Claudin 5 antibody

Package: 100 µg
Store at: -20°C

Summary

Product Description	Rabbit Polyclonal antibody recognizes Claudin 5
Tested Reactivity	Hu, Ms, Rat
Tested Application	IHC-P, WB
Host	Rabbit
Clonality	Polyclonal
Isotype	IgG
Target Name	Claudin 5
Species	Human
Immunogen	Synthetic peptide between aa. 169-218 of Human Claudin 5.
Conjugation	Un-conjugated
Alternate Names	Claudin-5; TMVCF; CPETRL1; BEC1; TMDVCF; Transmembrane protein deleted in VCFS; AWAL

Application Instructions

Application table	Application	Dilution
	IHC-P	1:50 - 1:200
	WB	1:200 - 1:500
Application Note	IHC-P: Antigen Retrieval: Boil tissue section in Sodium citrate buffer (pH 6.0) for 20 min. * The dilutions indicate recommended starting dilutions and the optimal dilutions or concentrations should be determined by the scientist.	
Positive Control	A549	
Observed Size	~ 23 kDa	

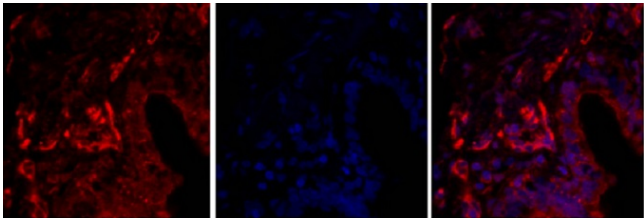
Properties

Form	Liquid
Purification	Affinity purification with immunogen.
Buffer	PBS, 0.02% Sodium azide, 50% Glycerol and 0.5% BSA.
Preservative	0.02% Sodium azide
Stabilizer	50% Glycerol and 0.5% BSA
Concentration	1 mg/ml
Storage instruction	For continuous use, store undiluted antibody at 2-8°C for up to a week. For long-term storage, aliquot and store at -20°C. Storage in frost free freezers is not recommended. Avoid repeated freeze/thaw cycles. Suggest spin the vial prior to opening. The antibody solution should be gently mixed before use.

Bioinformation

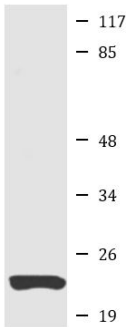
Gene Symbol	CLDN5
Gene Full Name	claudin 5
Background	This gene encodes a member of the claudin family. Claudins are integral membrane proteins and components of tight junction strands. Tight junction strands serve as a physical barrier to prevent solutes and water from passing freely through the paracellular space between epithelial or endothelial cell sheets. Mutations in this gene have been found in patients with velocardiofacial syndrome. Alternative splicing results in multiple transcript variants encoding distinct isoforms. [provided by RefSeq, May 2018]
Function	Plays a major role in tight junction-specific obliteration of the intercellular space. [UniProt]
Calculated Mw	23 kDa
Cellular Localization	Cell junction, tight junction. Cell membrane; Multi-pass membrane protein. [UniProt]

Images



ARG66852 anti-Claudin 5 antibody IHC-P image

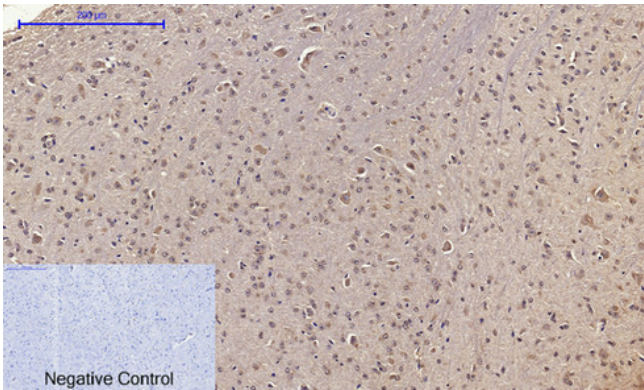
Immunohistochemistry: Paraffin-embedded Human lung tissue stained with ARG66852 anti-Claudin 5 antibody (red) at 1:200 dilution, overnight at 4°C. DAPI (blue) for nuclear staining.



A549

ARG66852 anti-Claudin 5 antibody WB image

Western blot: A549 cell lysate stained with ARG66852 anti-Claudin 5 antibody at 1:500 dilution.



ARG66852 anti-Claudin 5 antibody IHC-P image

Immunohistochemistry: Paraffin-embedded Mouse brain tissue. Antigen Retrieval: Boil tissue section in Sodium citrate buffer (pH 6.0) for 20 min. The tissue section was stained with ARG66852 anti-Claudin 5 antibody at 1:200 dilution, overnight at 4°C. Negative control was used by secondary antibody only.