

## ARG66878 anti-NSE / Neuron Specific Enolase antibody [SQab22281]

Package: 100 µl  
Store at: -20°C

### Summary

Product Description	Mouse Monoclonal antibody [SQab22281] recognizes NSE / Neuron Specific Enolase
Tested Reactivity	Hu, Ms
Tested Application	IHC-P, WB
Host	Mouse
Clonality	Monoclonal
Clone	SQab22281
Isotype	IgG
Target Name	NSE / Neuron Specific Enolase
Species	Human
Immunogen	Synthetic peptide within Human NSE aa 416-433.
Conjugation	Un-conjugated
Alternate Names	Neural enolase; NSE; Enolase 2; Gamma-enolase; 2-phospho-D-glycerate hydro-lyase; HEL-S-279; Neuron-specific enolase; EC 4.2.1.11

### Application Instructions

Application table	Application	Dilution
	IHC-P	1:100 - 1:200
	WB	1:500 - 1:2000
Application Note	IHC-P: Antigen Retrieval: Boil tissue section in Tris/EDTA buffer (pH 9.0). * The dilutions indicate recommended starting dilutions and the optimal dilutions or concentrations should be determined by the scientist.	
Observed Size	47 kDa	

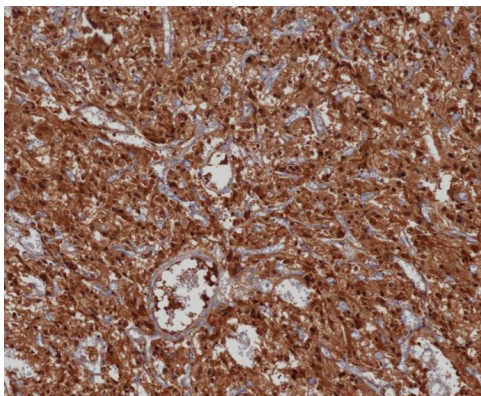
### Properties

Form	Liquid
Purification	Purification with Protein G.
Buffer	PBS, 0.01% Sodium azide, 40% Glycerol and 0.05% BSA.
Preservative	0.01% Sodium azide
Stabilizer	40% Glycerol and 0.05% BSA
Storage instruction	For continuous use, store undiluted antibody at 2-8°C for up to a week. For long-term storage, aliquot and store at -20°C or below. Storage in frost free freezers is not recommended. Avoid repeated freeze/thaw cycles. Suggest spin the vial prior to opening. The antibody solution should be gently mixed before use.

## Bioinformation

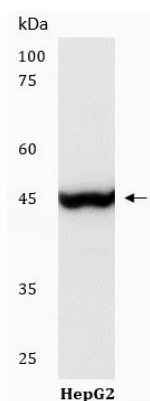
Gene Symbol	ENO2
Gene Full Name	enolase 2 (gamma, neuronal)
Background	This gene encodes one of the three enolase isoenzymes found in mammals. This isoenzyme, a homodimer, is found in mature neurons and cells of neuronal origin. A switch from alpha enolase to gamma enolase occurs in neural tissue during development in rats and primates. [provided by RefSeq, Jul 2008]
Function	Has neurotrophic and neuroprotective properties on a broad spectrum of central nervous system (CNS) neurons. Binds, in a calcium-dependent manner, to cultured neocortical neurons and promotes cell survival (By similarity). [UniProt]
Highlight	Related products: <a href="#">NSE antibodies</a> ; <a href="#">Anti-Mouse IgG secondary antibodies</a> ; Related news: <a href="#">Neuronal Development Marker</a>
Research Area	Cancer antibody; Gene Regulation antibody; Metabolism antibody; Signaling Transduction antibody
Calculated Mw	47 kDa

## Images



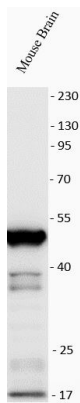
ARG66878 anti-NSE antibody [SQab22281] IHC-P image

Immunohistochemistry: Paraffin-embedded Neuroblastoma stained with ARG66878 anti-NSE antibody [SQab22281] at 1:200.



ARG66878 anti-NSE / Neuron Specific Enolase antibody [SQab22281] WB image (Customer review)

Western blot: HepG2 stained with ARG66878 anti-NSE / Neuron Specific Enolase antibody [SQab22281] at 1:500 dilution.



ARG66878 anti-NSE / Neuron Specific Enolase antibody [SQab22281]  
WB image (Customer review)

Western blot: Mouse brain stained with ARG66878 anti-NSE /  
Neuron Specific Enolase antibody [SQab22281] at 1:500 dilution.