

ARG66910 anti-ADM / Adrenomedullin antibody

Package: 100 µl
Store at: -20°C

Summary

Product Description	Rabbit Polyclonal antibody recognizes ADM / Adrenomedullin
Tested Reactivity	Hu, Ms, Rat
Tested Application	IHC-P, WB
Host	Rabbit
Clonality	Polyclonal
Isotype	IgG
Target Name	ADM / Adrenomedullin
Species	Human
Immunogen	Synthetic peptide within a.a. 100-150 of Human ADM/Adrenomedullin.
Conjugation	Un-conjugated
Alternate Names	ProAM N-terminal 20 peptide; ADM; AM; ProAM-N20; PAMP

Application Instructions

Application table	Application	Dilution
	IHC-P	1:100 - 1:300
	WB	1:500 - 1:2000
Application Note	* The dilutions indicate recommended starting dilutions and the optimal dilutions or concentrations should be determined by the scientist.	
Observed Size	20 kDa	

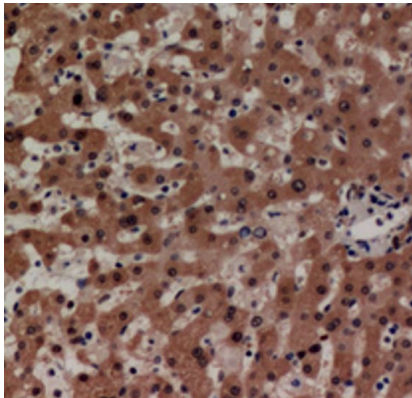
Properties

Form	Liquid
Purification	Affinity purification with immunogen.
Buffer	PBS, 0.02% Sodium azide, 0.5% BSA and 50% Glycerol.
Preservative	0.02% Sodium azide
Stabilizer	0.5% BSA and 50% Glycerol
Concentration	Batch dependent
Storage instruction	For continuous use, store undiluted antibody at 2-8°C for up to a week. For long-term storage, aliquot and store at -20°C or below. Storage in frost free freezers is not recommended. Avoid repeated freeze/thaw cycles. Suggest spin the vial prior to opening. The antibody solution should be gently mixed before use.
Note	For laboratory research only, not for drug, diagnostic or other use.

Bioinformation

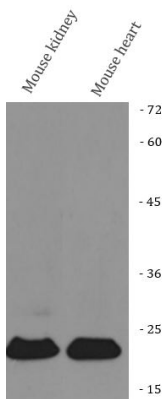
Gene Symbol	ADM
Gene Full Name	adrenomedullin
Background	The protein encoded by this gene is a prehormone which is cleaved to form two biologically active peptides, adrenomedullin and proadrenomedullin N-terminal 20 peptide. Adrenomedullin is a 52 aa peptide with several functions, including vasodilation, regulation of hormone secretion, promotion of angiogenesis, and antimicrobial activity. The antimicrobial activity is antibacterial, as the peptide has been shown to kill E. coli and S. aureus at low concentration. [provided by RefSeq, Aug 2014]
Function	AM and PAMP are potent hypotensive and vasodilator agents. Numerous actions have been reported most related to the physiologic control of fluid and electrolyte homeostasis. In the kidney, am is diuretic and natriuretic, and both am and pamp inhibit aldosterone secretion by direct adrenal actions. In pituitary gland, both peptides at physiologically relevant doses inhibit basal ACTH secretion. Both peptides appear to act in brain and pituitary gland to facilitate the loss of plasma volume, actions which complement their hypotensive effects in blood vessels. [UniProt]
Calculated Mw	20 kDa
PTM	Amidation; Cleavage on pair of basic residues; Disulfide bond [UniProt]
Cellular Localization	Secreted [UniProt]

Images



ARG66910 anti-ADM / Adrenomedullin antibody IHC-P image

Immunohistochemistry: Human liver stained with ARG66910 anti-ADM / Adrenomedullin antibody at 1:100 dilution.



ARG66910 anti-ADM / Adrenomedullin antibody WB image

Western blot: Mouse kidney and Mouse heart stained with ARG66910 anti-ADM / Adrenomedullin antibody.