

## ARG66936 anti-TROP2 antibody [SQab22266]

Package: 100 µl, 50 µl  
Store at: -20°C

### Summary

Product Description	Recombinant Rabbit Monoclonal antibody [SQab22266] recognizes TROP2
Tested Reactivity	Hu
Tested Application	IHC-P, WB
Host	Rabbit
Clonality	Monoclonal
Clone	SQab22266
Isotype	IgG
Target Name	TROP2
Species	Human
Immunogen	A synthetic peptide corresponding to the sequence of Human TROP2.
Conjugation	Un-conjugated
Alternate Names	Membrane component chromosome 1 surface marker 1; M1S1; Cell surface glycoprotein Trop-2; TROP2; EGP-1; EGP1; Tumor-associated calcium signal transducer 2; GA733-1; Pancreatic carcinoma marker protein GA733-1; GA7331; GP50

### Application Instructions

Application table	Application	Dilution
	IHC-P	1:100 - 1:200
	WB	1:500 - 1:2000
Application Note	IHC-P: Antigen Retrieval: Heat mediated was performed using Tris/EDTA buffer (pH 9.0). Incubate the samples at RT (18-25°C) for 30 min. * The dilutions indicate recommended starting dilutions and the optimal dilutions or concentrations should be determined by the scientist.	
Positive Control	human esophageal carcinoma tissue	
Observed Size	37-50 kDa	

### Properties

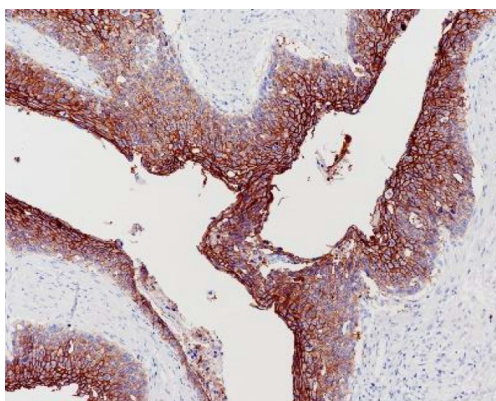
Form	Liquid
Purification	Purification with Protein A.
Buffer	PBS, 0.01% Sodium azide, 40% Glycerol and 0.05%BSA.
Preservative	0.01% Sodium azide
Stabilizer	40% Glycerol and 0.05%BSA

Storage instruction	For continuous use, store undiluted antibody at 2-8°C for up to a week. For long-term storage, aliquot and store at -20°C or below. Storage in frost free freezers is not recommended. Avoid repeated freeze/thaw cycles. Suggest spin the vial prior to opening. The antibody solution should be gently mixed before use.
Note	For laboratory research only, not for drug, diagnostic or other use.

## Bioinformation

Gene Symbol	TACSTD2
Gene Full Name	tumor-associated calcium signal transducer 2
Background	This intronless gene encodes a carcinoma-associated antigen. This antigen is a cell surface receptor that transduces calcium signals. Mutations of this gene have been associated with gelatinous drop-like corneal dystrophy.[provided by RefSeq, Dec 2009]
Function	May function as a growth factor receptor. [UniProt]
Calculated Mw	36 kDa
PTM	The N-terminus is blocked. [UniProt]

## Images



ARG66936 anti-TROP2 antibody [SQab22266] IHC-P image

Immunohistochemistry: Formalin/PFA-fixed and paraffin-embedded sections of human esophageal carcinoma tissue stained with ARG66936 anti-TROP2 antibody [SQab22266]. Antigen Retrieval: Heat tissue section in Tris-EDTA buffer (pH 9.0).



ARG66936 anti-TROP2 antibody [SQab22266] WB image (Customer review)

Western blot: PC3 stained with ARG66936 anti-TROP2 antibody [SQab22266] at 1:500 dilution.