

## ARG67027 anti-alpha Fetoprotein antibody [SQab30312]

Package: 100 µl  
Store at: -20°C

### Summary

Product Description	Recombinant rabbit Monoclonal antibody [SQab30312] recognizes alpha Fetoprotein
Tested Reactivity	Hu
Tested Application	IHC-P, WB
Host	Rabbit
Clonality	Monoclonal
Clone	SQab30312
Isotype	IgG
Target Name	alpha Fetoprotein
Species	Human
Immunogen	Synthetic peptide of Human alpha Fetoprotein.
Conjugation	Un-conjugated
Alternate Names	AFP, Alpha Fetoprotein, Alpha-Fetoprotein, HPAFP , FETA, Alpha-1-Fetoprotein, Alpha-Fetoglobulin, AFPD

### Application Instructions

Application table	Application	Dilution
	IHC-P	1:50 - 1:100
	WB	1:500 - 1:2000
Application Note	The dilutions indicate recommended starting dilutions and the optimal dilutions or concentrations should be determined by the scientist.	
Positive Control	Hepatocellular carcinoma	
Observed Size	65-72 kDa	

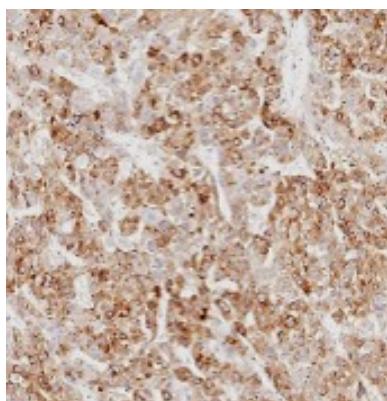
### Properties

Form	Liquid
Purification	Purification with Protein A.
Buffer	PBS, 0.01% Sodium azide, 40% Glycerol and 0.05%BSA.
Preservative	0.01% Sodium azide
Stabilizer	40% Glycerol and 0.05%BSA
Storage instruction	For continuous use, store undiluted antibody at 2-8°C for up to a week. For long-term storage, aliquot and store at -20°C or below. Storage in frost free freezers is not recommended. Avoid repeated freeze/thaw cycles. Suggest spin the vial prior to opening. The antibody solution should be gently mixed before use.

## Bioinformation

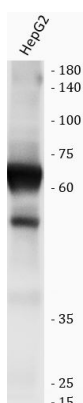
Gene Symbol	AFP
Gene Full Name	Alpha Fetoprotein
Background	This gene encodes alpha-fetoprotein, a major plasma protein produced by the yolk sac and the liver during fetal life. Alpha-fetoprotein expression in adults is often associated with hepatocarcinoma and with teratoma, and has prognostic value for managing advanced gastric cancer. However, hereditary persistence of alpha-fetoprotein may also be found in individuals with no obvious pathology. The protein is thought to be the fetal counterpart of serum albumin, and the alpha-fetoprotein and albumin genes are present in tandem in the same transcriptional orientation on chromosome 4. Alpha-fetoprotein is found in monomeric as well as dimeric and trimeric forms, and binds copper, nickel, fatty acids and bilirubin. The level of alpha-fetoprotein in amniotic fluid is used to measure renal loss of protein to screen for spina bifida and anencephaly. [provided by RefSeq, Oct 2019]
Function	Binds copper, nickel, and fatty acids as well as, and bilirubin less well than, serum albumin. Only a small percentage (less than 2%) of the human AFP shows estrogen-binding properties. [Uniprot]
Calculated Mw	69 kDa
PTM	Independent studies suggest heterogeneity of the N-terminal sequence of the mature protein and of the cleavage site of the signal sequence. [Uniprot]
Cellular Localization	Secreted

## Images



ARG67027 anti-alpha Fetoprotein antibody [SQab30312] IHC-P image

Immunohistochemistry: Formalin-fixed and paraffin-embedded hepatocellular carcinoma stained with ARG67027 anti-alpha Fetoprotein antibody [SQab30312].



ARG67027 anti-alpha Fetoprotein antibody [SQab30312] WB image (Customer review)

Western blot: HepG2 stained with ARG67027 anti-alpha Fetoprotein antibody [SQab30312] at 1:500 dilution.