

## ARG67028 anti-BAP1 / UCHL2 antibody [SQab30317]

Package: 100 µl  
Store at: -20°C

### Summary

Product Description	Recombinant rabbit Monoclonal antibody [SQab30317] recognizes BAP1 / UCHL2
Tested Reactivity	Hu
Tested Application	IHC-P
Host	Rabbit
Clonality	Monoclonal
Clone	SQab30317
Isotype	IgG
Target Name	BAP1 / UCHL2
Species	Human
Immunogen	Synthetic peptide of Human BAP1 / UCHL2.
Conjugation	Un-conjugated
Alternate Names	BAP1, BRCA1 Associated Protein 1, KIAA0272, Hucep-6, UCHL2, BRCA1 Associated Protein-1 (Ubiquitin Carboxy-Terminal Hydrolase), Ubiquitin Carboxyl-Terminal Hydrolase BAP1, Cerebral Protein 6, Ubiquitin Carboxy-Terminal Hydrolase, BRCA1-Associated Protein 1, Cerebral Protein-13 , EC 3.4.19.12, HUCEP-13, KURIS, TPDS1, UVM2

### Application Instructions

Application table	Application	Dilution
	IHC-P	1:50 - 1:100
Application Note	The dilutions indicate recommended starting dilutions and the optimal dilutions or concentrations should be determined by the scientist.	
Positive Control	Human mesothelioma	

### Properties

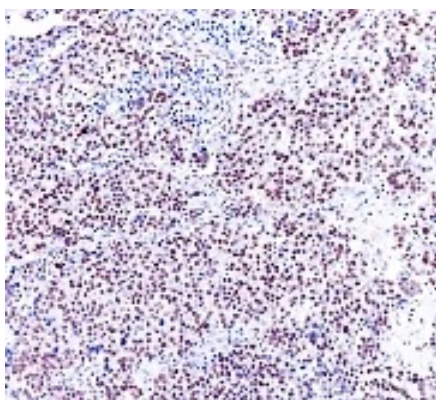
Form	Liquid
Purification	Purification with Protein A.
Buffer	PBS, 0.01% Sodium azide, 40% Glycerol and 0.05%BSA.
Preservative	0.01% Sodium azide
Stabilizer	40% Glycerol and 0.05%BSA
Storage instruction	For continuous use, store undiluted antibody at 2-8°C for up to a week. For long-term storage, aliquot and store at -20°C or below. Storage in frost free freezers is not recommended. Avoid repeated freeze/thaw cycles. Suggest spin the vial prior to opening. The antibody solution should be gently mixed before use.

Note For laboratory research only, not for drug, diagnostic or other use.

## Bioinformation

Gene Symbol	BAP1
Gene Full Name	BRCA1 Associated Protein 1
Background	This gene belongs to the ubiquitin C-terminal hydrolase subfamily of deubiquitinating enzymes that are involved in the removal of ubiquitin from proteins. The encoded enzyme binds to the breast cancer type 1 susceptibility protein (BRCA1) via the RING finger domain of the latter and acts as a tumor suppressor. In addition, the enzyme may be involved in regulation of transcription, regulation of cell cycle and growth, response to DNA damage and chromatin dynamics. Germline mutations in this gene may be associated with tumor predisposition syndrome (TPDS), which involves increased risk of cancers including malignant mesothelioma, uveal melanoma and cutaneous melanoma. [provided by RefSeq, May 2013]
Function	Deubiquitinating enzyme that plays a key role in chromatin by mediating deubiquitination of histone H2A and HCFC1. Catalytic component of the PR-DUB complex, a complex that specifically mediates deubiquitination of histone H2A monoubiquitinated at 'Lys-119'. Does not deubiquitinate monoubiquitinated histone H2B. Acts as a regulator of cell growth by mediating deubiquitination of HCFC1 N-terminal and C-terminal chains, with some specificity toward 'Lys-48'-linked polyubiquitin chains compared to 'Lys-63'-linked polyubiquitin chains. Interferes with the BRCA1 and BARD1 heterodimer activity by inhibiting their ability to mediate ubiquitination and autoubiquitination. It however does not mediate deubiquitination of BRCA1 and BARD1. Able to mediate autodeubiquitination via intramolecular interactions to counteract monoubiquitination at the nuclear localization signal (NLS), thereby protecting it from cytoplasmic sequestration. Acts as a tumor suppressor. [Uniprot]
Calculated Mw	80 kDa
PTM	Ubiquitinated: monoubiquitinated at multiple site of its nuclear localization signal (NLS) BY UBE2O, leading to cytoplasmic retention. Able to mediate autodeubiquitination via intramolecular interactions to counteract cytoplasmic retention. [UniProt]
Cellular Localization	Cytoplasm, Nucleus

## Images



ARG67028 anti-BAP1 / UCHL2 antibody [SQab30317] IHC-P image

Immunohistochemistry: Formalin-fixed and paraffin-embedded human mesothelioma stained with ARG67028 anti-BAP1 / UCHL2 antibody [SQab30317].