

ARG67066 anti-EZH2 antibody [SQab30336]

Package: 100 µl
Store at: -20°C

Summary

Product Description	Recombinant Rabbit Monoclonal antibody [SQab30336] recognizes EZH2
Tested Reactivity	Hu
Tested Application	IHC-P, WB
Host	Rabbit
Clonality	Monoclonal
Clone	SQab30336
Isotype	IgG
Target Name	EZH2
Species	Human
Immunogen	Recombinant protein fragment of EZH2
Conjugation	Un-conjugated
Alternate Names	EZH2 ; Enhancer Of Zeste 2 Polycomb Repressive Complex 2 Subunit; ENX-1; KMT6 ; KMT6A; Histone-Lysine N-Methyltransferase EZH2; Lysine N-Methyltransferase 6; Enhancer Of Zeste Homolog 2; EZH1; Enhancer Of Zeste (Drosophila) Homolog 2; Enhancer Of Zeste Homolog 2 (Drosophila) 2 EC 2.1.1.43'; EC 2.1.1.356; EC 2.1.1.43; EC 2.1.1; EZH2b; ENX1; WVS2; WVS

Application Instructions

Application table	Application	Dilution
	IHC-P	1:100-1:200
	WB	1:500-1:1000
Application Note	* The dilutions indicate recommended starting dilutions and the optimal dilutions or concentrations should be determined by the scientist.	
Observed Size	90 -102 kDa	

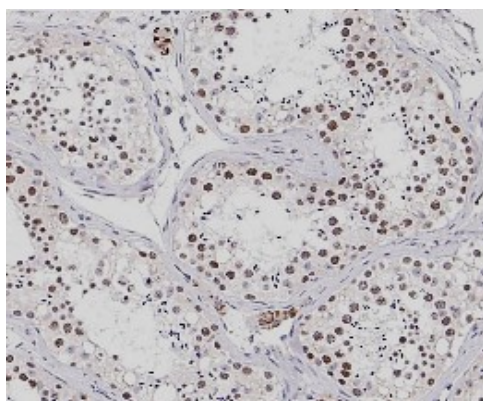
Properties

Form	Liquid
Purification	Purification with Protein A.
Buffer	PBS, 0.01% Sodium azide, 40% Glycerol and 0.05% BSA.
Preservative	0.01% Sodium azide
Stabilizer	40% Glycerol and 0.05% BSA
Storage instruction	For continuous use, store undiluted antibody at 2-8°C for up to a week. For long-term storage, aliquot and store at -20°C. Storage in frost free freezers is not recommended. Avoid repeated freeze/thaw cycles. Suggest spin the vial prior to opening. The antibody solution should be gently mixed before use.

Bioinformation

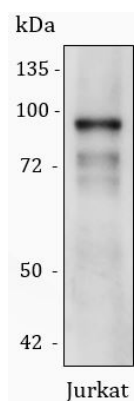
Gene Symbol	EZH2
Gene Full Name	enhancer of zeste 2 polycomb repressive complex 2 subunit
Background	This gene encodes a member of the Polycomb-group (PcG) family. PcG family members form multimeric protein complexes, which are involved in maintaining the transcriptional repressive state of genes over successive cell generations. This protein associates with the embryonic ectoderm development protein, the VAV1 oncoprotein, and the X-linked nuclear protein. This protein may play a role in the hematopoietic and central nervous systems. Multiple alternatively spliced transcript variants encoding distinct isoforms have been identified for this gene. [provided by RefSeq, Feb 2011]
Function	Polycomb group (PcG) protein. Catalytic subunit of the PRC2/EED-EZH2 complex, which methylates 'Lys-9' (H3K9me) and 'Lys-27' (H3K27me) of histone H3, leading to transcriptional repression of the affected target gene. Able to mono-, di- and trimethylate 'Lys-27' of histone H3 to form H3K27me1, H3K27me2 and H3K27me3, respectively. Displays a preference for substrates with less methylation, loses activity when progressively more methyl groups are incorporated into H3K27, H3K27me0 > H3K27me1 > H3K27me2. [UniProt]
Calculated Mw	85 kDa
PTM	Glycoprotein, Isopeptide bond, Phosphoprotein, Ubl conjugation. [UniProt]
Cellular Localization	Nucleus. [UniProt]

Images



ARG67066 anti-EZH2 antibody [SQab30336] IHC-P image

Immunohistochemistry: Human testis tissue stained with ARG67066 anti-EZH2 antibody [SQab30336] at 1:100 dilution.



ARG67066 anti-EZH2 antibody [SQab30336] WB image (Customer review)

Western blot: Jurkat stained with ARG67066 anti-EZH2 antibody [SQab30336] at 1:500 dilution.