

ARG67094 anti-Claudin 4 antibody

Package: 100 µl
Store at: -20°C

Summary

Product Description	Rabbit polyclonal antibody recognizes Claudin 4
Tested Reactivity	Hu
Predict Reactivity	Pig, Rb, Sheep
Tested Application	ICC/IF, IHC-P, WB
Host	Rabbit
Clonality	Polyclonal
Isotype	IgG
Target Name	Claudin 4
Species	Human
Immunogen	Synthetic peptide derived from Human Claudin 4.
Conjugation	Un-conjugated
Alternate Names	CPE-R; Williams-Beuren syndrome chromosomal region 8 protein; hCPE-R; CPE-receptor; CPETR; CPETR1; Clostridium perfringens enterotoxin receptor; Claudin-4; CPER; WBSCR8

Application Instructions

Application table	Application	Dilution
	ICC/IF	1:50 - 1:200
	IHC-P	1:50 - 1:100
	WB	1:500 - 1:1000
Application Note	* The dilutions indicate recommended starting dilutions and the optimal dilutions or concentrations should be determined by the scientist.	

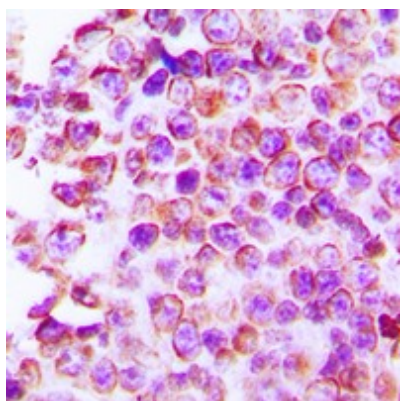
Properties

Form	Liquid
Purification	Affinity purification with immunogen.
Buffer	0.42% Potassium phosphate (pH 7.3), 0.87% NaCl, 0.01% Sodium azide and 30% Glycerol.
Preservative	0.01% Sodium azide
Stabilizer	30% Glycerol
Storage instruction	For continuous use, store undiluted antibody at 2-8°C for up to a week. For long-term storage, aliquot and store at -20°C or below. Storage in frost free freezers is not recommended. Avoid repeated freeze/thaw cycles. Suggest spin the vial prior to opening. The antibody solution should be gently mixed before use.

Bioinformation

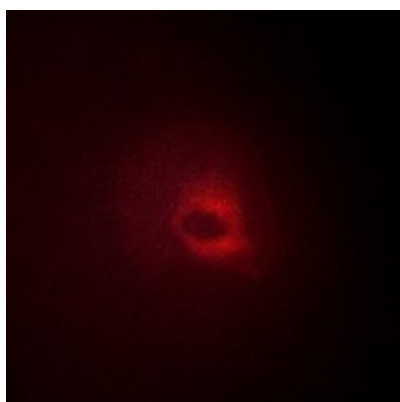
Gene Symbol	CLDN4
Gene Full Name	claudin 4
Background	The protein encoded by this intronless gene belongs to the claudin family. Claudins are integral membrane proteins that are components of the epithelial cell tight junctions, which regulate movement of solutes and ions through the paracellular space. This protein is a high-affinity receptor for Clostridium perfringens enterotoxin (CPE) and may play a role in internal organ development and function during pre- and postnatal life. This gene is deleted in Williams-Beuren syndrome, a neurodevelopmental disorder affecting multiple systems. [provided by RefSeq, Sep 2013]
Function	Plays a major role in tight junction-specific obliteration of the intercellular space. [UniProt]
Calculated Mw	22 kDa
PTM	Phosphorylated. Phosphorylation by EPHA2 is stimulated by EFNA1 and alters interaction with TJP1. [UniProt]
Cellular Localization	Cell junction, tight junction. Cell membrane; Multi-pass membrane protein. Note=CLDN4 is required for tight junction localization in the kidney. [UniProt]

Images



ARG67094 anti-Claudin 4 antibody IHC-P image

Immunohistochemistry: Human tonsil stained with ARG67094 anti-Claudin 4 antibody.



ARG67094 anti-Claudin 4 antibody ICC/IF image

Immunofluorescence: HeLa stained with ARG67094 anti-Claudin 4 antibody.

ARG67094 anti-Claudin 4 antibody WB image

Western blot: HEK293T stained with ARG67094 anti-Claudin 4 antibody.

