

ARG67133 anti-Cyclin B1 antibody

Package: 20 µl
Store at: -20°C

Summary

Product Description	Rabbit Polyclonal antibody recognizes Cyclin B1
Tested Reactivity	Hu, Ms, Rat
Tested Application	ICC/IF, IHC-P, WB
Host	Rabbit
Clonality	Polyclonal
Isotype	IgG
Target Name	Cyclin B1
Species	Human
Immunogen	Synthetic peptide derived from Human Cyclin B1
Conjugation	Un-conjugated
Alternate Names	CCNB1; Cyclin B1; CCNB; G2/Mitotic-Specific Cyclin-B1; G2/Mitotic-Specific Cyclin B1

Application Instructions

Application table	Application	Dilution
	ICC/IF	1:200 - 1:1000
	IHC-P	1:100 - 1:300
	WB	1:500 - 1:2000
Application Note	* The dilutions indicate recommended starting dilutions and the optimal dilutions or concentrations should be determined by the scientist.	
Observed Size	58 kDa	

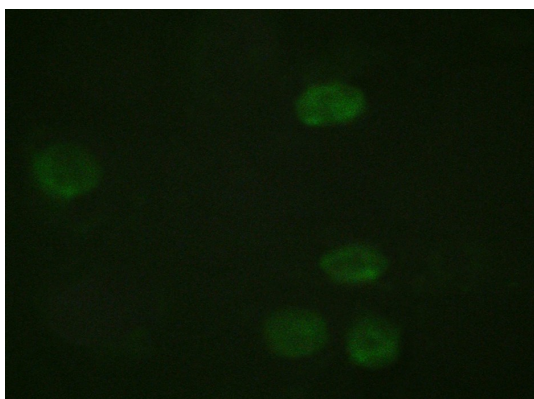
Properties

Form	Liquid
Purification	Affinity chromatography purified
Buffer	PBS, 0.02% Sodium azide, 0.5% BSA and 50% Glycerol
Preservative	0.02% Sodium azide
Stabilizer	0.5% BSA, 50% Glycerol
Concentration	1 mg/ml
Storage instruction	For continuous use, store undiluted antibody at 2-8°C for up to a week. For long-term storage, aliquot and store at -20°C or below. Storage in frost free freezers is not recommended. Avoid repeated freeze/thaw cycles. Suggest spin the vial prior to opening. The antibody solution should be gently mixed before use.

Bioinformation

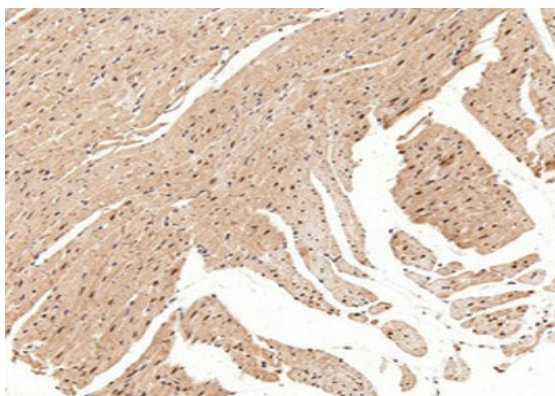
Gene Symbol	CCNB1
Gene Full Name	cyclin B1
Background	The protein encoded by this gene is a regulatory protein involved in mitosis. The gene product complexes with p34(cdc2) to form the maturation-promoting factor (MPF). The encoded protein is necessary for proper control of the G2/M transition phase of the cell cycle. [provided by RefSeq, Aug 2017]
Function	Essential for the control of the cell cycle at the G2/M (mitosis) transition. [UniProt]
Research Area	Cancer antibody; Cell Biology and Cellular Response antibody; Gene Regulation antibody; Cell Cycle Study antibody.
Calculated Mw	48 kDa
PTM	Acetylation, Phosphoprotein, Ubl conjugation.[UniProt]
Cellular Localization	Cytoplasm, Cytoskeleton, Nucleus. [UniProt]

Images



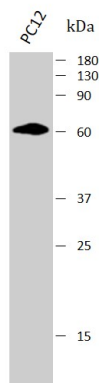
ARG67133 anti-Cyclin B1 antibody ICC/IF image

Immunofluorescence: HeLa stained with ARG67133 anti-Cyclin B1 antibody.



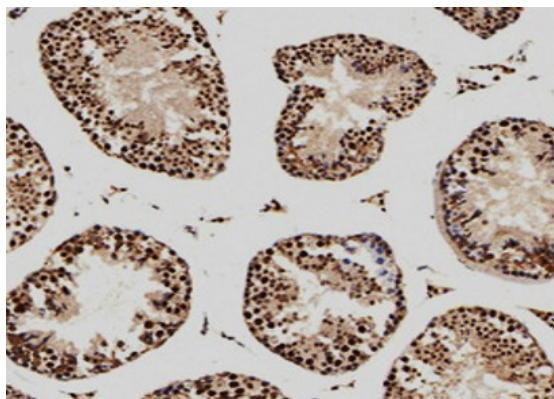
ARG67133 anti-Cyclin B1 antibody IHC-P image

Immunohistochemistry: Rat heart stained with ARG67133 anti-Cyclin B1 antibody at 1:200 dilution.



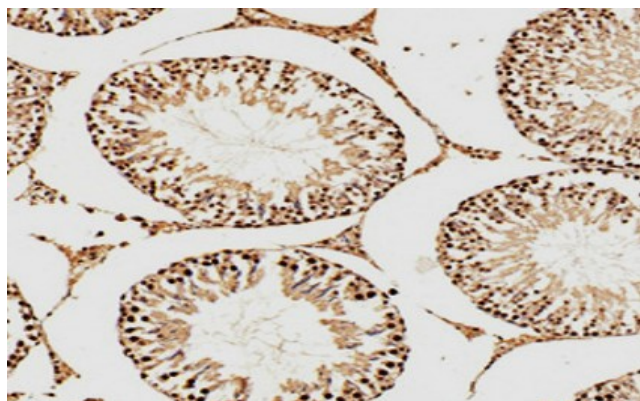
ARG67133 anti-Cyclin B1 antibody WB image

Western blot: PC12 stained with ARG67133 anti-Cyclin B1 antibody at 1:500 dilution.



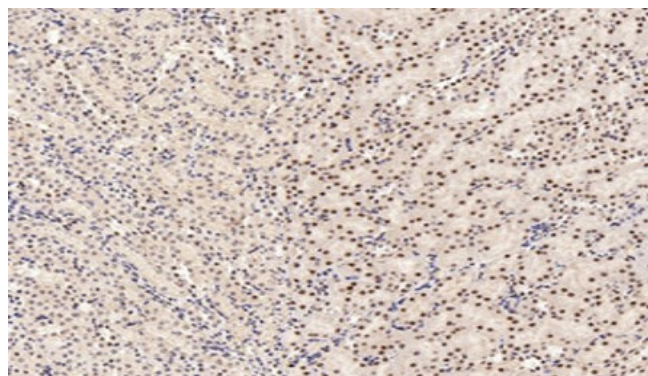
ARG67133 anti-Cyclin B1 antibody IHC-P image

Immunohistochemistry: Mouse testis stained with ARG67133 anti-Cyclin B1 antibody at 1:200 dilution.



ARG67133 anti-Cyclin B1 antibody IHC-P image

Immunohistochemistry: Rat testis stained with ARG67133 anti-Cyclin B1 antibody at 1:200 dilution.



ARG67133 anti-Cyclin B1 antibody IHC-P image

Immunohistochemistry: Mouse kidney stained with ARG67133 anti-Cyclin B1 antibody at 1:200 dilution.