

ARG67136 anti-Rb1 / Retinoblastoma protein antibody

Package: 20 µl
Store at: -20°C

Summary

Product Description	Rabbit Polyclonal antibody recognizes Rb1 / Retinoblastoma protein
Tested Reactivity	Hu, Ms, Rat
Tested Application	ICC/IF, IHC-P, WB
Host	Rabbit
Clonality	Polyclonal
Isotype	IgG
Target Name	Rb1 / Retinoblastoma protein
Species	Human
Immunogen	Synthetic peptide of Human Rb1 / Retinoblastoma protein.
Conjugation	Un-conjugated
Alternate Names	RB1; RB Transcriptional Corepressor 1; PPP1R130; RB; Protein Phosphatase 1, Regulatory Subunit 130; Prepro-Retinoblastoma-Associated Protein; Retinoblastoma-Associated Protein; Retinoblastoma 1; P110-RB1; P105-Rb; Pp110; OSRC; PRb; Retinoblastoma Susceptibility Protein; Osteosarcoma; Rb

Application Instructions

Application table	Application	Dilution
	ICC/IF	1:200 - 1:1000
	IHC-P	1:100 - 1:300
	WB	1:500 - 1:2000
Application Note	* The dilutions indicate recommended starting dilutions and the optimal dilutions or concentrations should be determined by the scientist.	

Properties

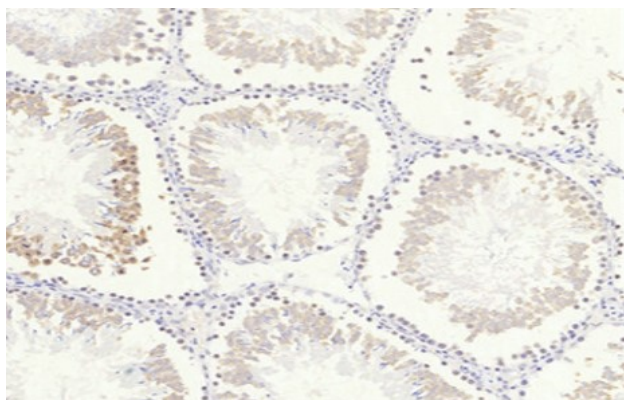
Form	Liquid
Purification	Affinity chromatography purified
Buffer	PBS, 0.02% Sodium azide, 0.5% BSA and 50% Glycerol
Preservative	0.02% Sodium azide
Stabilizer	0.5% BSA, 50% Glycerol
Concentration	1 mg/ml
Storage instruction	For continuous use, store undiluted antibody at 2-8°C for up to a week. For long-term storage, aliquot and store at -20°C or below. Storage in frost free freezers is not recommended. Avoid repeated freeze/thaw cycles. Suggest spin the vial prior to opening. The antibody solution should be gently mixed before use.

Note For laboratory research only, not for drug, diagnostic or other use.

Bioinformation

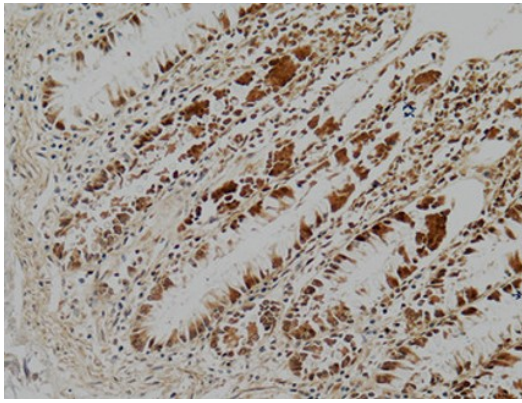
Gene Symbol	RB1
Gene Full Name	RB Transcriptional Corepressor 1
Background	The protein encoded by this gene is a negative regulator of the cell cycle and was the first tumor suppressor gene found. The encoded protein also stabilizes constitutive heterochromatin to maintain the overall chromatin structure. The active, hypophosphorylated form of the protein binds transcription factor E2F1. Defects in this gene are a cause of childhood cancer retinoblastoma (RB), bladder cancer, and osteogenic sarcoma. [provided by RefSeq, Jul 2008]
Function	Directly involved in heterochromatin formation by maintaining overall chromatin structure and, in particular, that of constitutive heterochromatin by stabilizing histone methylation. Recruits and targets histone methyltransferases SUV39H1, KMT5B and KMT5C, leading to epigenetic transcriptional repression. Controls histone H4 'Lys-20' trimethylation. Inhibits the intrinsic kinase activity of TAF1. Mediates transcriptional repression by SMARCA4/BRG1 by recruiting a histone deacetylase (HDAC) complex to the c-FOS promoter. In resting neurons, transcription of the c-FOS promoter is inhibited by BRG1-dependent recruitment of a phospho-RB1-HDAC1 repressor complex. Upon calcium influx, RB1 is dephosphorylated by calcineurin, which leads to release of the repressor complex. (Microbial infection) In case of viral infections, interactions with SV40 large T antigen, HPV E7 protein or adenovirus E1A protein induce the disassembly of RB1-E2F1 complex thereby disrupting RB1's activity. [UniProt]
Research Area	Cancer antibody; Cell Biology and Cellular Response antibody; Controls and Markers antibody; Gene Regulation antibody
Calculated Mw	106 kDa
PTM	Acetylation, Methylation, Phosphoprotein. [UniProt]
Cellular Localization	Nucleus. [UniProt]

Images



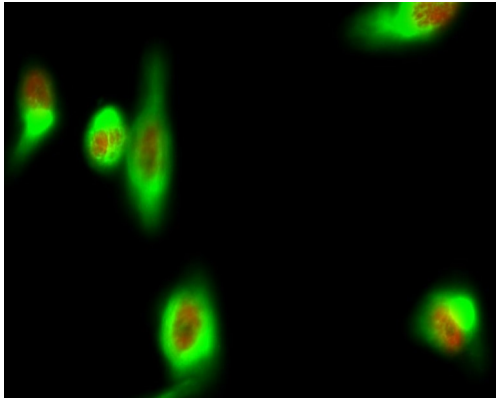
ARG67136 anti-Rb1 / Retinoblastoma protein antibody IHC-P image

Immunohistochemistry: Rat liver stained with ARG67136 anti-Rb1 / Retinoblastoma protein antibody at 1:200 dilution.



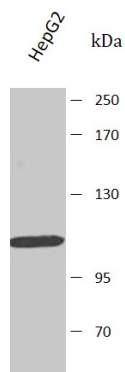
ARG67136 anti-Rb1 / Retinoblastoma protein antibody IHC-P image

Immunohistochemistry: Human colon stained with ARG67136 anti-Rb1 / Retinoblastoma protein antibody at 1:200 dilution.



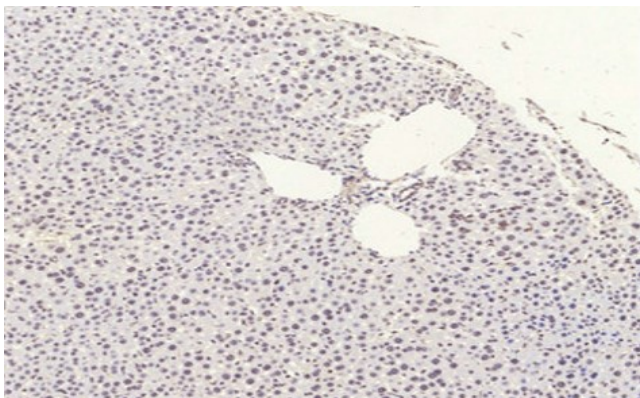
ARG67136 anti-Rb1 / Retinoblastoma protein antibody ICC/IF image

Immunofluorescence: HeLa stained with ARG67136 anti-Rb1 / Retinoblastoma protein antibody at 1:200 dilution.



ARG67136 anti-Rb1 / Retinoblastoma protein antibody WB image

Western blot: HepG2 stained with ARG67136 anti-Rb1 / Retinoblastoma protein antibody at 1:1000 dilution.



ARG67136 anti-Rb1 / Retinoblastoma protein antibody IHC-P image

Immunohistochemistry: Mouse liver stained with ARG67136 anti-Rb1 / Retinoblastoma protein antibody at 1:200 dilution.