

ARG67142 anti-CXCR4 antibody

Package: 20 µl
Store at: -20°C

Summary

Product Description	Rabbit Polyclonal antibody recognizes CXCR4
Tested Reactivity	Hu, Ms, Rat
Tested Application	IHC-P, WB
Host	Rabbit
Clonality	Polyclonal
Isotype	IgG
Target Name	CXCR4
Species	Human
Immunogen	Synthetic peptide corresponding to Human CXCR4.
Conjugation	Un-conjugated
Alternate Names	CXCR4; C-X-C Motif Chemokine Receptor 4; LESTR; Fusin; HM89; D2S201E; NPY3R; HSY3RR; NPY3R; CD184; NPYR; Leukocyte-Derived Seven Transmembrane Domain Receptor; Lipopolysaccharide-Associated Protein 3; Stromal Cell-Derived Factor 1 Receptor; Chemokine (C-X-C Motif) Receptor 4; C-X-C Chemokine Receptor Type 4; LPS-Associated Protein 3; SDF-1 Receptor; CD184 Antigen; LAP-3; NPYRL; FB22; LCR1 ; Seven-Transmembrane-Segment Receptor, Spleen; Chemokine (C-X-C Motif), Receptor 4 (Fusin); Seven Transmembrane Helix Receptor; Neuropeptide Y Receptor Y3; Neuropeptide Y3 Receptor; WHIMS1; CXC-R4; CXCR-4; WHIMS; LAP3; WHIM

Application Instructions

Application table	Application	Dilution
	IHC-P	1:100 - 1:300
	WB	1:500 - 1:2000
Application Note	* The dilutions indicate recommended starting dilutions and the optimal dilutions or concentrations should be determined by the scientist.	
Observed Size	47-64 kda	

Properties

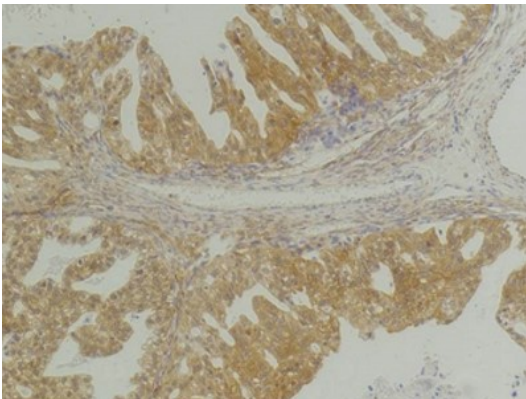
Form	Liquid
Purification	Affinity chromatography purified
Buffer	PBS, 0.02% Sodium azide, 0.5% BSA and 50% Glycerol
Preservative	0.02% Sodium azide
Stabilizer	0.5% BSA, 50% Glycerol
Concentration	1 mg/ml

Storage instruction	For continuous use, store undiluted antibody at 2-8°C for up to a week. For long-term storage, aliquot and store at -20°C or below. Storage in frost free freezers is not recommended. Avoid repeated freeze/thaw cycles. Suggest spin the vial prior to opening. The antibody solution should be gently mixed before use.
Note	For laboratory research only, not for drug, diagnostic or other use.

Bioinformation

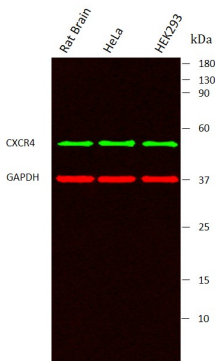
Gene Symbol	CXCR4
Gene Full Name	C-X-C Motif Chemokine Receptor 4
Background	This gene encodes a CXC chemokine receptor specific for stromal cell-derived factor-1. The protein has 7 transmembrane regions and is located on the cell surface. It acts with the CD4 protein to support HIV entry into cells and is also highly expressed in breast cancer cells. Mutations in this gene have been associated with WHIM (warts, hypogammaglobulinemia, infections, and myelokathexis) syndrome. Alternate transcriptional splice variants, encoding different isoforms, have been characterized. [provided by RefSeq, Jul 2008]
Function	Involved in hematopoiesis and in cardiac ventricular septum formation. Also plays an essential role in vascularization of the gastrointestinal tract, probably by regulating vascular branching and/or remodeling processes in endothelial cells. Involved in cerebellar development. In the CNS, could mediate hippocampal-neuron survival. [UniProt]
Calculated Mw	40 kDa
PTM	Disulfide bond, Glycoprotein, Isopeptide bond, Phosphoprotein, Proteoglycan, Sulfation, Ubl conjugation. [UniProt]
Cellular Localization	Cell junction, Cell membrane, Endosome, Lysosome, Membrane. [UniProt]

Images



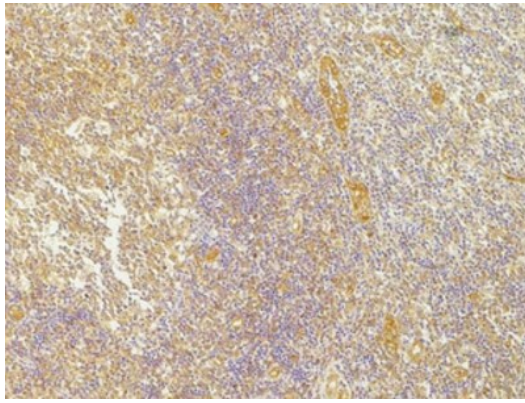
ARG67142 anti-CXCR4 antibody IHC-P image

Immunohistochemistry: Human Breast Carcinoma stained with ARG67142 anti-CXCR4 antibody at 1:200 dilution.



ARG67142 anti-CXCR4 antibody WB image

Western blot: Rat Brai, HeLa and HEK293 stained with ARG67142 anti-CXCR4 antibody at 1:1000 dilution.



ARG67142 anti-CXCR4 antibody IHC-P image

Immunohistochemistry: Human Tonsil Tissue stained with ARG67142 anti-CXCR4 antibody at 1:200 dilution.