

## ARG67214 anti-ESAM antibody

Package: 100 µg  
Store at: -20°C

### Summary

Product Description	Rabbit Polyclonal antibody recognizes ESAM
Tested Reactivity	Hu
Tested Application	FACS, IHC-Fr, WB
Host	Rabbit
Clonality	Polyclonal
Target Name	ESAM
Species	Human
Immunogen	Recombinant Human ESAM.
Conjugation	Un-conjugated
Alternate Names	ESAM; Endothelial Cell Adhesion Molecule; W117m; Endothelial Cell-Selective Adhesion Molecule; HUEL (C4orf1)-Interacting Protein; LP4791 Protein; 2310008D05Rik; NEDIHSS

### Application Instructions

Application table	Application	Dilution
	FACS	1-5 µg/ml
	IHC-Fr	2-10 µg/ml
	WB	2-5 µg/ml
Application Note	* The dilutions indicate recommended starting dilutions and the optimal dilutions or concentrations should be determined by the scientist.	

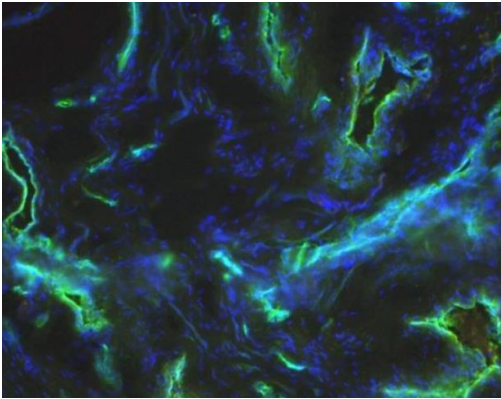
### Properties

Form	Powder
Purification	Protein A purified
Buffer	PBS
Reconstitution	Water
Concentration	0.1 - 1.0 mg/ml
Storage instruction	For continuous use, store undiluted antibody at 2-8°C for up to a week. For long-term storage, aliquot and store at -20°C or below. Storage in frost free freezers is not recommended. Avoid repeated freeze/thaw cycles. Suggest spin the vial prior to opening. The antibody solution should be gently mixed before use.
Note	For laboratory research only, not for drug, diagnostic or other use.

Bioinformation

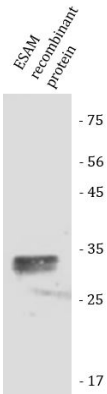
Gene Symbol	ESAM
Gene Full Name	Endothelial Cell Adhesion Molecule
Background	Enables cell-cell adhesion mediator activity. Involved in several processes, including bicellular tight junction assembly; cell-cell adhesion; and regulation of actin filament polymerization. Located in cell-cell junction and plasma membrane. Part of protein-containing complex. [provided by Alliance of Genome Resources, Nov 2024]
Function	Can mediate aggregation most likely through a homophilic molecular interaction. [UniProt]
Calculated Mw	41 kDa
PTM	Disulfide bond; Glycoprotein; Phosphoprotein. [UniProt]
Cellular Localization	Cell junction; Cell membrane; Membrane; Tight junction. [UniProt]

Images



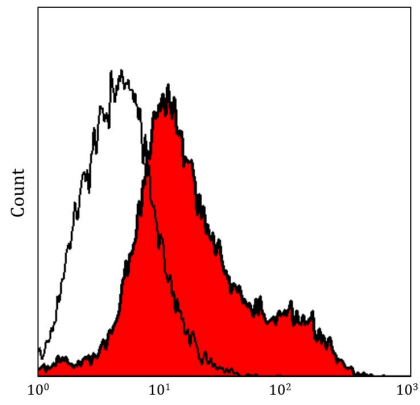
ARG67214 anti-ESAM antibody IHC-Fr image

Immunohistochemistry: Frozen Human foreskin stained with ARG67214 anti-ESAM antibody.



ARG67214 anti-ESAM antibody WB image

Western blot: ESAM recombinant protein stained with ARG67214 anti-ESAM antibody.



#### ARG67214 anti-ESAM antibody FACS image

Flow Cytometry: Human dermal lymphatic endothelial stained with ARG67214 anti-ESAM antibody at dilution.