

## ARG67223 anti-EGFL7 antibody

Package: 100 µg  
Store at: -20°C

### Summary

Product Description	Rabbit Polyclonal antibody recognizes EGFL7
Tested Reactivity	Ms
Tested Application	ICC/IF, WB
Host	Rabbit
Clonality	Polyclonal
Target Name	EGFL7
Species	Mouse
Immunogen	Recombinant protein corresponding to Mouse EGFL7 (a.a. sequence Q181-L275).
Conjugation	Un-conjugated
Alternate Names	EGFL7; EGF Like Domain Multiple 7; ZNEU1; Multiple Epidermal Growth Factor-Like Domains Protein 7; Epidermal Growth Factor-Like Protein 7; Multiple EGF-Like Domains Protein 7; Vascular Endothelial Statin; NOTCH4-Like Protein; EGF-Like Protein 7; EGF-Like-Domain, Multiple 7; VE-STATIN; VE-Statin; MEGF7; Zneu1; NEU1

### Application Instructions

Application table	Application	Dilution
	ICC/IF	1µg/ml
	WB	1-5 µg/ml
Application Note	* The dilutions indicate recommended starting dilutions and the optimal dilutions or concentrations should be determined by the scientist.	

### Properties

Form	Powder
Purification	Protein A purified
Buffer	PBS
Reconstitution	Water
Concentration	0.1 - 1.0 mg/ml
Storage instruction	For continuous use, store undiluted antibody at 2-8°C for up to a week. For long-term storage, aliquot and store at -20°C or below. Storage in frost free freezers is not recommended. Avoid repeated freeze/thaw cycles. Suggest spin the vial prior to opening. The antibody solution should be gently mixed before use.
Note	For laboratory research only, not for drug, diagnostic or other use.

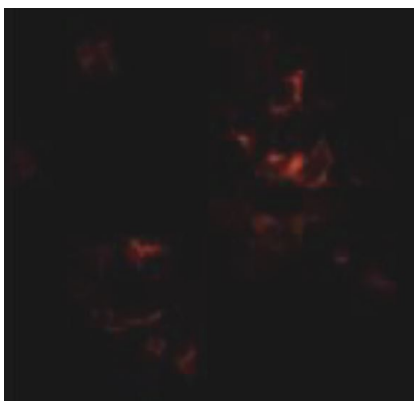
## Bioinformation

---

Gene Symbol	EGFL7
Gene Full Name	EGF Like Domain Multiple 7
Background	This gene encodes a secreted endothelial cell protein that contains two epidermal growth factor-like domains. The encoded protein may play a role in regulating vasculogenesis. This protein may be involved in the growth and proliferation of tumor cells. Alternate splicing results in multiple transcript variants. [provided by RefSeq, Feb 2012]
Function	Regulates vascular tubulogenesis in vivo. Inhibits platelet-derived growth factor (PDGF)-BB-induced smooth muscle cell migration and promotes endothelial cell adhesion to the extracellular matrix and angiogenesis.
Calculated Mw	30 kDa
PTM	Disulfide bond. [UniProt]
Cellular Localization	Secreted. [UniProt]

## Images

---



ARG67223 anti-EGFL7 antibody ICC/IF image

Immunofluorescence: EGFL7 transfected HEK293T cells stained with ARG67223 anti-EGFL7 antibody at 1µg/ml dilution.