

ARG67224 anti-Paxillin antibody

Package: 100 µl
Store at: -20°C

Summary

Product Description	Rabbit Polyclonal antibody recognizes Paxillin
Tested Reactivity	Hu, Ms, Rat
Tested Application	ICC/IF, IHC-P, WB
Host	Rabbit
Clonality	Polyclonal
Isotype	IgG
Target Name	Paxillin
Conjugation	Un-conjugated
Alternate Names	PXN; Paxillin; Testicular Tissue Protein Li 134

Application Instructions

Application table	Application	Dilution
	ICC/IF	1:200 - 1:500
	IHC-P	1:200 - 1:500
	WB	1:1000 - 1:3000
Application Note	* The dilutions indicate recommended starting dilutions and the optimal dilutions or concentrations should be determined by the scientist.	

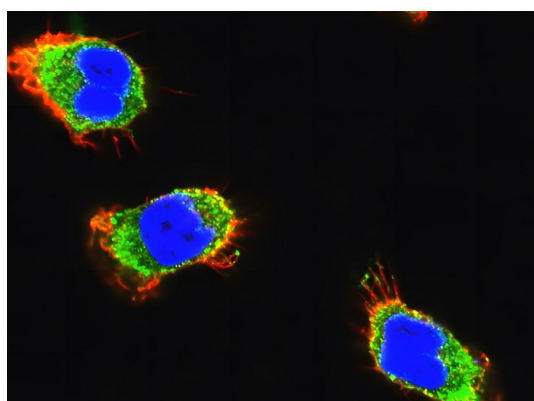
Properties

Form	Liquid
Purification	Affinity purified
Buffer	100 mM Tris Glycine (pH 7.0), 0.025% ProClin 300 and 20% Glycerol.
Preservative	0.025% ProClin 300
Stabilizer	20% Glycerol
Concentration	1.01 mg/ml
Storage instruction	For continuous use, store undiluted antibody at 2-8°C for up to a week. For long-term storage, aliquot and store at -20°C or below. Storage in frost free freezers is not recommended. Avoid repeated freeze/thaw cycles. Suggest spin the vial prior to opening. The antibody solution should be gently mixed before use.
Note	For laboratory research only, not for drug, diagnostic or other use.

Bioinformation

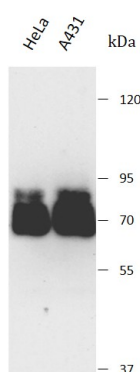
Gene Symbol	PXN
Gene Full Name	Paxillin
Background	This gene encodes a cytoskeletal protein involved in actin-membrane attachment at sites of cell adhesion to the extracellular matrix (focal adhesion). Alternatively spliced transcript variants encoding different isoforms have been described for this gene. These isoforms exhibit different expression pattern, and have different biochemical, as well as physiological properties (PMID:9054445). [provided by RefSeq, Aug 2011]
Function	Cytoskeletal protein involved in actin-membrane attachment at sites of cell adhesion to the extracellular matrix (focal adhesion). Recruits other proteins such as TRIM15 to focal adhesion. [Uniprot]
Calculated Mw	65 kDa
PTM	Acetylation; Phosphoprotein. [Uniprot]
Cellular Localization	Cell junction; Cytoplasm; Cytoskeleton. [Uniprot]

Images



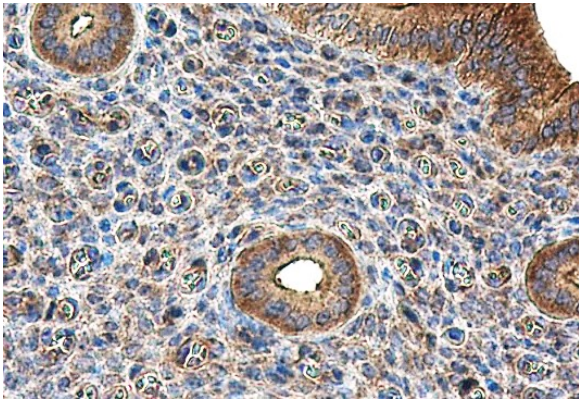
ARG67224 anti-Paxillin antibody ICC/IF image

Immunofluorescence: A431 stained with ARG67224 anti-Paxillin antibody.



ARG67224 anti-Paxillin antibody WB image

Western blot: HeLa and A431 stained with ARG67224 anti-Paxillin antibody at 1:2000 dilution.



ARG67224 anti-Paxillin antibody IHC-P image

Immunohistochemistry: Mouse cervix stained with ARG67224 anti-Paxillin antibody at 1:300 dilution.