

ARG67237 anti-Apolipoprotein AI antibody [3A10]

Package: 100 µl
Store at: -20°C

Summary

Product Description	Mouse Monoclonal antibody [3A10] recognizes Apolipoprotein AI
Tested Reactivity	Hu
Tested Application	ICC/IF, IHC-P, WB
Host	Mouse
Clonality	Monoclonal
Clone	3A10
Isotype	IgG1
Target Name	Apolipoprotein AI
Species	Human
Conjugation	Un-conjugated
Alternate Names	APOA1; Apolipoprotein A1; Apolipoprotein A-I; Apo-AI; Epididymis Secretory Sperm Binding Protein; AMYLD3; HPALP2; Apo(A); ApoA-I

Application Instructions

Application table	Application	Dilution
	ICC/IF	1:200 - 1:500
	IHC-P	1:200 - 1:500
	WB	1:1000 - 1:2000
Application Note	* The dilutions indicate recommended starting dilutions and the optimal dilutions or concentrations should be determined by the scientist.	

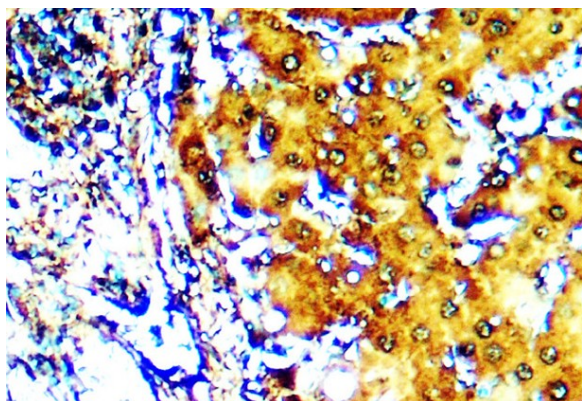
Properties

Form	Liquid
Purification	Affinity purified
Buffer	PBS (pH 7.0), 0.025% ProClin 300 and 20% Glycerol.
Preservative	0.025% ProClin 300
Stabilizer	20% Glycerol
Concentration	1 mg/ml
Storage instruction	For continuous use, store undiluted antibody at 2-8°C for up to a week. For long-term storage, aliquot and store at -20°C or below. Storage in frost free freezers is not recommended. Avoid repeated freeze/thaw cycles. Suggest spin the vial prior to opening. The antibody solution should be gently mixed before use.

Bioinformation

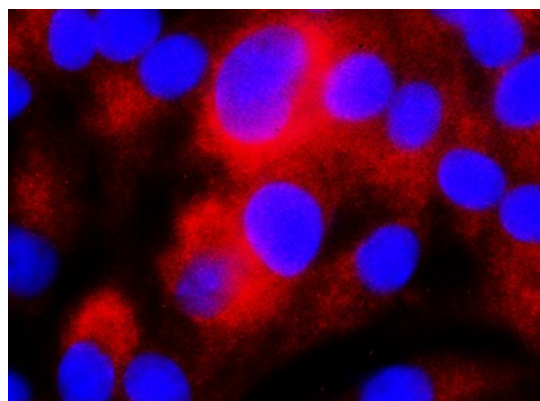
Gene Symbol	APOA1
Gene Full Name	Apolipoprotein A1
Background	This gene encodes apolipoprotein A-I, which is the major protein component of high density lipoprotein (HDL) in plasma. The encoded preproprotein is proteolytically processed to generate the mature protein, which promotes cholesterol efflux from tissues to the liver for excretion, and is a cofactor for lecithin cholesterolacyltransferase (LCAT), an enzyme responsible for the formation of most plasma cholesteryl esters. This gene is closely linked with two other apolipoprotein genes on chromosome 11. Defects in this gene are associated with HDL deficiencies, including Tangier disease, and with systemic non-neuropathic amyloidosis. Alternative splicing results in multiple transcript variants, at least one of which encodes a preproprotein. [provided by RefSeq, Dec 2015]
Function	Participates in the reverse transport of cholesterol from tissues to the liver for excretion by promoting cholesterol efflux from tissues and by acting as a cofactor for the lecithin cholesterol acyltransferase (LCAT). As part of the SPAP complex, activates spermatozoa motility. [Uniprot]
Calculated Mw	31 kDa
PTM	Glycation, Glycoprotein, Lipoprotein, Oxidation, Palmitate, Phosphoprotein. [Uniprot]
Cellular Localization	Amyloid, HDL, Secreted. [Uniprot]

Images



ARG67237 anti-Apolipoprotein A1 antibody [3A10] IHC-P image

Immunohistochemistry: Human Hepatocellular carcinoma stained with ARG67237 anti-Apolipoprotein A1 antibody [3A10] at 1:200 dilution.



ARG67237 anti-Apolipoprotein A1 antibody [3A10] ICC/IF image

Immunofluorescence: HepG2 stained with ARG67237 anti-Apolipoprotein A1 antibody [3A10] at 1:200 dilution.

ARG67237 anti-Apolipoprotein AI antibody [3A10] WB image

Western blot: Human serum stained with ARG67237 anti-Apolipoprotein AI antibody [3A10] at 1:1000 dilution.

