

## ARG67290 anti-RPA14 / RPA3 antibody

Package: 100 µl  
Store at: -20°C

### Summary

Product Description	Rabbit Polyclonal antibody recognizes RPA14 / RPA3
Tested Reactivity	Hu, Ms
Tested Application	IHC-P, WB
Host	Rabbit
Clonality	Polyclonal
Isotype	IgG
Target Name	RPA14 / RPA3
Species	Human
Immunogen	Synthetic peptide corresponding to a.a. 30-80 of human RPA14 / RPA3.
Conjugation	Un-conjugated
Alternate Names	RPA3; Replication Protein A3; REPA3; RPA14; Replication Protein A 14 KDa Subunit; Replication Protein A3, 14kDa

### Application Instructions

Application table	Application	Dilution
	IHC-P	1:50 - 1:300
	WB	1:500 - 1:2000
Application Note	* The dilutions indicate recommended starting dilutions and the optimal dilutions or concentrations should be determined by the scientist.	
Observed Size	14 kDa	

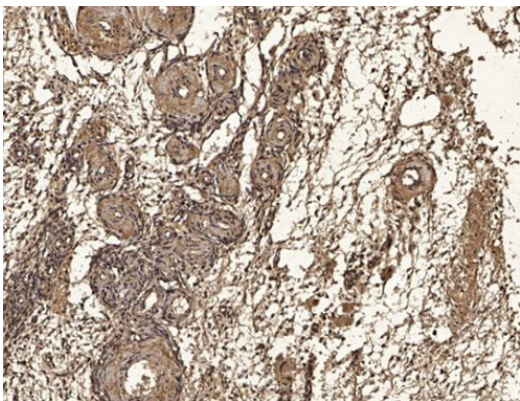
### Properties

Form	Liquid
Purification	Affinity chromatography purified
Buffer	PBS, 0.02% sodium azide, 50% glycerol and 0.5% BSA
Preservative	0.02% sodium azide
Stabilizer	50% glycerol and 0.5% BSA
Concentration	1 mg/ml
Storage instruction	For continuous use, store undiluted antibody at 2-8°C for up to a week. For long-term storage, aliquot and store at -20°C or below. Storage in frost free freezers is not recommended. Avoid repeated freeze/thaw cycles. Suggest spin the vial prior to opening. The antibody solution should be gently mixed before use.

Bioinformation

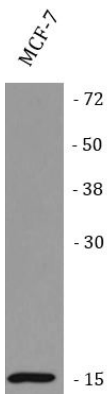
Gene Symbol	RPA3
Gene Full Name	Replication Protein A3
Background	Enables damaged DNA binding activity and single-stranded DNA binding activity. Involved in DNA metabolic process. Part of DNA replication factor A complex. [provided by Alliance of Genome Resources, Jul 2025]
Function	As part of the heterotrimeric replication protein A complex (RPA/RP-A), binds and stabilizes single-stranded DNA intermediates that form during DNA replication or upon DNA stress. It prevents their reannealing and in parallel, recruits and activates different proteins and complexes involved in DNA metabolism. Thereby, it plays an essential role both in DNA replication and the cellular response to DNA damage. [UniProt]
Calculated Mw	14 kDa
PTM	Acetylation; Isopeptide bond; Ubl conjugation. [UniProt]
Cellular Localization	Nucleus. [UniProt]

Images



ARG67290 anti-RPA14 / RPA3 antibody IHC-P image

Immunohistochemistry: Human oophoroma. 1 stained with ARG67290 anti-RPA14 / RPA3 antibody.



ARG67290 anti-RPA14 / RPA3 antibody WB image

Western blot: MCF-7 stained with ARG67290 anti-RPA14 / RPA3 antibody.