

ARG67291
anti-Ly6G antibody [12A02]Package: 100 µl
Store at: -20°C

Summary

Product Description	Rabbit Monoclonal antibody [12A02] recognizes Ly6G
Tested Reactivity	Ms
Tested Application	IHC-P, WB
Host	Rabbit
Clonality	Monoclonal
Clone	12A02
Isotype	IgG,Kappa
Target Name	Ly6G
Conjugation	Un-conjugated
Alternate Names	Gr1; Gr-1; Ly-6G

Application Instructions

Application table	Application	Dilution
	IHC-P	1:1000-1:4000
	WB	1:1000-1:5000
Application Note	* The dilutions indicate recommended starting dilutions and the optimal dilutions or concentrations should be determined by the scientist.	

Properties

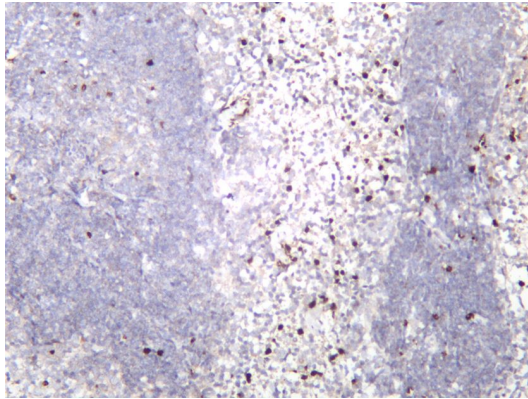
Form	Liquid
Purification	Purification with Protein A
Buffer	PBS, 0.05% Proclin 300, 50% Glycerol and 0.05% BSA
Preservative	0.05% Proclin 300
Stabilizer	50% Glycerol and 0.05% BSA
Storage instruction	For continuous use, store undiluted antibody at 2-8°C for up to a week. For long-term storage, aliquot and store at -20°C or below. Storage in frost free freezers is not recommended. Avoid repeated freeze/thaw cycles. Suggest spin the vial prior to opening. The antibody solution should be gently mixed before use.
Note	For laboratory research only, not for drug, diagnostic or other use.

Bioinformation

Gene Symbol	Ly6g
-------------	------

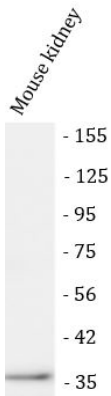
Gene Full Name	lymphocyte antigen 6 complex, locus G
Calculated Mw	12 kDa
Cellular Localization	Cell membrane; GPI-anchor. [UniProt]

Images



ARG67291 anti-Ly6G antibody [12A02] IHC-P image

Immunohistochemistry: Mouse spleen stained with ARG67291 anti-Ly6G antibody [12A02]



ARG67291 anti-Ly6G antibody [12A02] WB image

Western blot: Mouse kidney stained with ARG67291 anti-Ly6G antibody [12A02]