

ARG67309 anti-ABCC1 / MRP1 antibody

Package: 100 µl, 50 µl
Store at: -20°C

Summary

Product Description	Rabbit Polyclonal antibody recognizes ABCC1 / MRP1
Tested Reactivity	Hu, Ms
Tested Application	IHC-P, WB
Host	Rabbit
Clonality	Polyclonal
Isotype	IgG
Target Name	ABCC1 / MRP1
Species	Human
Immunogen	KLH-conjugated synthetic peptide of Human ABCC1 / MRP1.
Conjugation	Un-conjugated
Alternate Names	GS-X; ATP-binding cassette sub-family C member 1; ABCC; Leukotriene C; ABC29; MRP; 4; LTC4 transporter; MRP1; Multidrug resistance-associated protein 1

Application Instructions

Application table	Application	Dilution
	IHC-P	1:50-1:200
	WB	1:500-1:1000
Application Note	* The dilutions indicate recommended starting dilutions and the optimal dilutions or concentrations should be determined by the scientist.	
Observed Size	210 kDa	

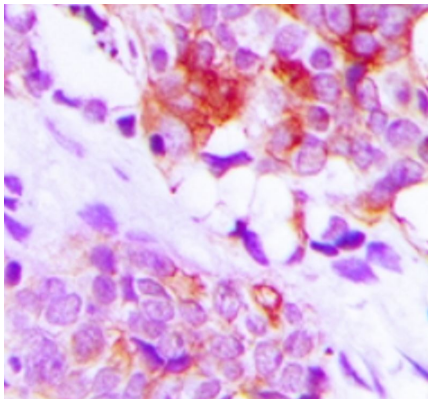
Properties

Form	Liquid
Purification	Affinity purification with immunogen.
Buffer	0.42% Potassium phosphate (pH 7.3), 0.87% NaCl, 0.01% Sodium azide and 30% Glycerol.
Preservative	0.01% Sodium azide
Stabilizer	30% Glycerol
Storage instruction	For continuous use, store undiluted antibody at 2-8°C for up to a week. For long-term storage, aliquot and store at -20°C or below. Storage in frost free freezers is not recommended. Avoid repeated freeze/thaw cycles. Suggest spin the vial prior to opening. The antibody solution should be gently mixed before use.
Note	For laboratory research only, not for drug, diagnostic or other use.

Bioinformation

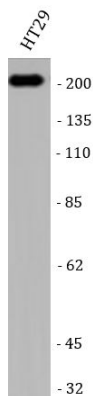
Gene Symbol	ABCC1
Gene Full Name	ATP-binding cassette, sub-family C (CFTR/MRP), member 1
Background	The protein encoded by this gene is a member of the superfamily of ATP-binding cassette (ABC) transporters. ABC proteins transport various molecules across extra-and intra-cellular membranes. ABC genes are divided into seven distinct subfamilies (ABC1, MDR/TAP, MRP, ALD, OABP, GCN20, White). This full transporter is a member of the MRP subfamily which is involved in multi-drug resistance. This protein functions as a multispecific organic anion transporter, with oxidized glutathione, cysteinyl leukotrienes, and activated aflatoxin B1 as substrates. This protein also transports glucuronides and sulfate conjugates of steroid hormones and bile salts. Alternatively spliced variants of this gene have been described but their full-length nature is unknown. [provided by RefSeq, Apr 2012]
Function	Mediates export of organic anions and drugs from the cytoplasm. Mediates ATP-dependent transport of glutathione and glutathione conjugates, leukotriene C4, estradiol-17-beta-o-glucuronide, methotrexate, antiviral drugs and other xenobiotics. Confers resistance to anticancer drugs. Hydrolyzes ATP with low efficiency. [UniProt]
Calculated Mw	172 kDa
Cellular Localization	Cell membrane. [UniProt]

Images



ARG67309 anti-ABCC1 / MRP1 antibody IHC-P image

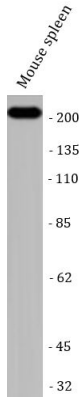
Immunohistochemistry: Human lung cancer stained with ARG67309 anti-ABCC1 / MRP1 antibody.



ARG67309 anti-ABCC1 / MRP1 antibody WB image

Western blot: HT29 stained with ARG67309 anti-ABCC1 / MRP1 antibody.

Mouse spleen



-200
-135
-110
-85
-62
-45
-32

ARG67309 anti-ABCC1 / MRP1 antibody WB image

Western blot: Mouse spleen stained with ARG67309 anti-ABCC1 / MRP1 antibody.