

## ARG67317 anti-SLC40A1 antibody [4F06]

Package: 100 µl  
Store at: -20°C

### Summary

Product Description	Rabbit Monoclonal antibody [4F06] recognizes SLC40A1
Tested Reactivity	Hu, Rat
Tested Application	IHC-P, WB
Host	Rabbit
Clonality	Monoclonal
Clone	4F06
Isotype	IgG,Kappa
Target Name	SLC40A1
Conjugation	Un-conjugated
Alternate Names	SLC40A1; Solute Carrier Family 40 Member 1; IREG1; FPN1; FPN; SLC11A3; MTP1; HFE4; Solute Carrier Family 11 (Proton-Coupled Divalent Metal Ion Transporters), Member 3; Solute Carrier Family 40 (Iron-Regulated Transporter), Member 1; SLC40 Iron Transporter; Iron Regulated Gene 1; Ferroportin; Iron-Regulated Transporter 1; Ferroportin 1; Ferroportin-1; MSTP079; MST079

### Application Instructions

Application table	Application	Dilution
	IHC-P	1:100-1:200
	WB	1:2000-1:10000
Application Note	* For IHC, we suggest antigen retrieval with TE buffer pH 9.0 * The dilutions indicate recommended starting dilutions and the optimal dilutions or concentrations should be determined by the scientist.	
Observed Size	80 kDa	

### Properties

Form	Liquid
Purification	Purification with Protein A
Buffer	PBS, 50% Glycerol, 0.05% Proclin 300, 0.05% BSA
Preservative	0.05% Proclin 300
Stabilizer	50% Glycerol and 0.05% BSA
Storage instruction	For continuous use, store undiluted antibody at 2-8°C for up to a week. For long-term storage, aliquot and store at -20°C or below. Storage in frost free freezers is not recommended. Avoid repeated freeze/thaw cycles. Suggest spin the vial prior to opening. The antibody solution should be gently mixed before use.
Note	For laboratory research only, not for drug, diagnostic or other use.

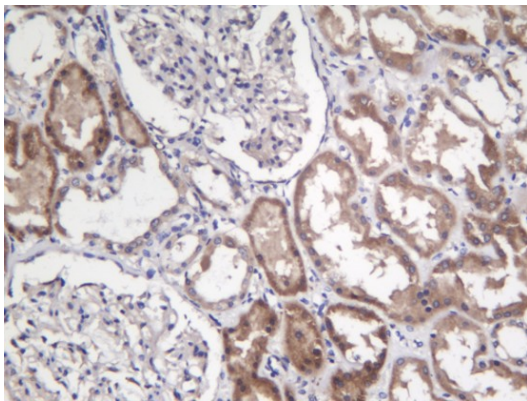
## Bioinformation

---

Gene Symbol	SLC40A1
Gene Full Name	Solute Carrier Family 40 Member 1
Background	The protein encoded by this gene is a cell membrane protein that may be involved in iron export from duodenal epithelial cells. Defects in this gene are a cause of hemochromatosis type 4 (HFE4). [provided by RefSeq, Jul 2008]
Function	Transports Fe(2+) from the inside of a cell to the outside of the cell, playing a key role for maintaining systemic iron homeostasis. [UniProt]
Calculated Mw	63 kDa
PTM	Glycoprotein; Ubl conjugation. [UniProt]
Cellular Localization	Cell membrane. [UniProt]

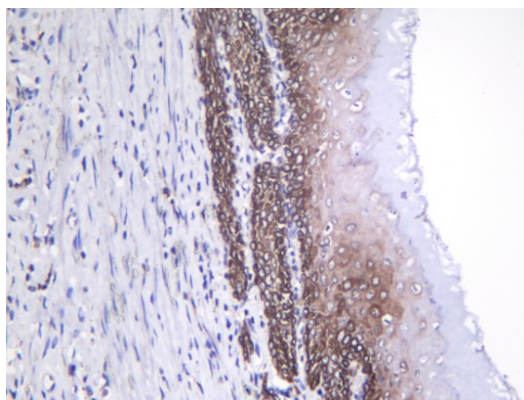
## Images

---



ARG67317 anti-SLC40A1 antibody [4F06] IHC-P image

Immunohistochemistry: Human kidney stained with ARG67317 anti-SLC40A1 antibody [4F06].



ARG67317 anti-SLC40A1 antibody [4F06] IHC-P image

Immunohistochemistry: Rat stomach stained with ARG67317 anti-SLC40A1 antibody [4F06].

ARG67317 anti-SLC40A1 antibody [4F06] WB image

Western blot: Rat spleen stained with ARG67317 anti-SLC40A1 antibody [4F06].

