

ARG67318
anti-GCLM antibody [4G02]Package: 100 µl
Store at: -20°C

Summary

Product Description	Rabbit Monoclonal antibody [4G02] recognizes GCLM
Tested Reactivity	Hu
Tested Application	ICC/IF, IHC-P, WB
Host	Rabbit
Clonality	Monoclonal
Clone	4G02
Isotype	IgG,Kappa
Target Name	GCLM
Conjugation	Un-conjugated
Alternate Names	GCS light chain; Gamma-ECS regulatory subunit; Glutamate--cysteine ligase regulatory subunit; GLCLR; Gamma-glutamylcysteine synthetase regulatory subunit; Glutamate--cysteine ligase modifier subunit

Application Instructions

Application table	Application	Dilution
	ICC/IF	1:200-1:1000
	IHC-P	1:200-1:1000
	WB	1:2000-1:10000
Application Note	* For IHC, we suggest antigen retrieval with TE buffer pH 9.0 * The dilutions indicate recommended starting dilutions and the optimal dilutions or concentrations should be determined by the scientist.	
Observed Size	31 kDa	

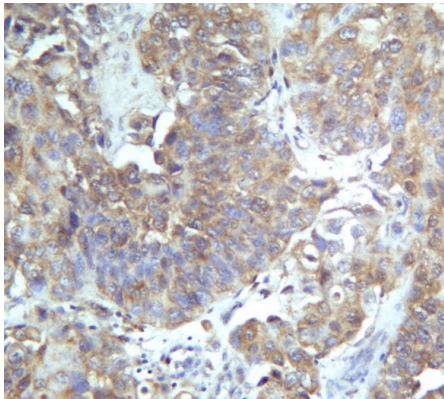
Properties

Form	Liquid
Purification	Purification with Protein A
Buffer	PBS, 50% Glycerol, 0.05% Proclin 300, 0.05% BSA
Preservative	0.05% Proclin 300
Stabilizer	50% Glycerol and 0.05% BSA
Storage instruction	For continuous use, store undiluted antibody at 2-8°C for up to a week. For long-term storage, aliquot and store at -20°C or below. Storage in frost free freezers is not recommended. Avoid repeated freeze/thaw cycles. Suggest spin the vial prior to opening. The antibody solution should be gently mixed before use.
Note	For laboratory research only, not for drug, diagnostic or other use.

Bioinformation

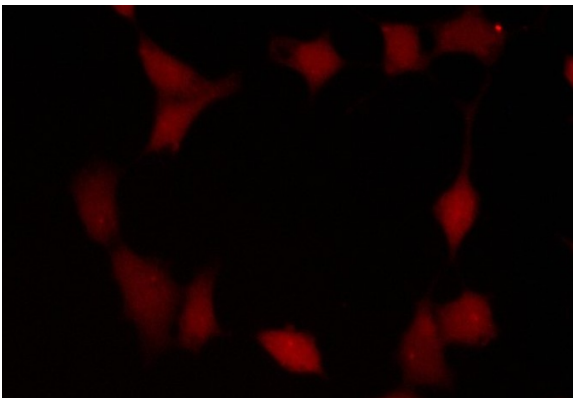
Gene Symbol	GCLM
Gene Full Name	glutamate-cysteine ligase, modifier subunit
Background	Glutamate-cysteine ligase, also known as gamma-glutamylcysteine synthetase, is the first rate limiting enzyme of glutathione synthesis. The enzyme consists of two subunits, a heavy catalytic subunit and a light regulatory subunit. Gamma glutamylcysteine synthetase deficiency has been implicated in some forms of hemolytic anemia. Alternative splicing results in multiple transcript variants encoding different isoforms. [provided by RefSeq, Apr 2015]
Calculated Mw	31 kDa

Images



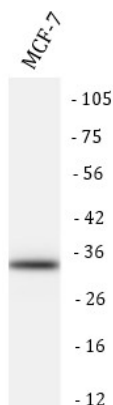
ARG67318 anti-GCLM antibody [4G02] IHC-P image

Immunohistochemistry: Human bladder carcinoma stained with ARG67318 anti-GCLM antibody [4G02].



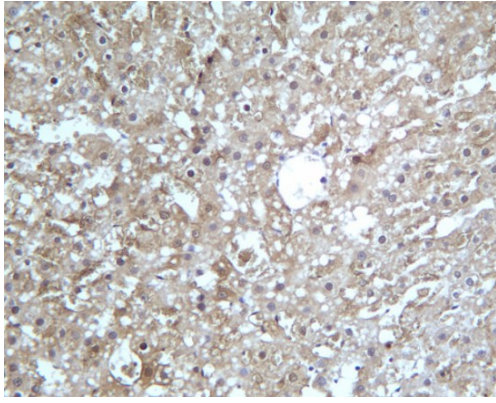
ARG67318 anti-GCLM antibody [4G02] ICC/IF image

Immunofluorescence: HEK293 stained with ARG67318 anti-GCLM antibody [4G02] at RLgene dilution.



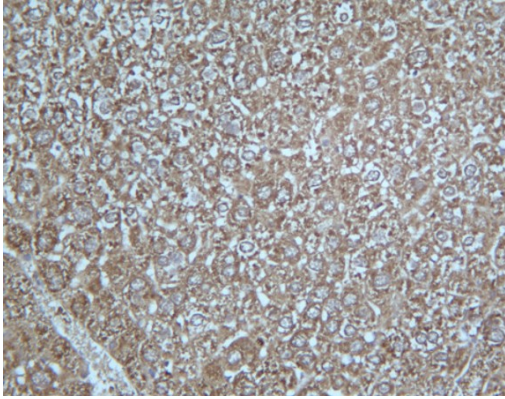
ARG67318 anti-GCLM antibody [4G02] WB image

Western blot: MCF-7 stained with ARG67318 anti-GCLM antibody [4G02].



ARG67318 anti-GCLM antibody [4G02] IHC-P image

Immunohistochemistry: Rat liver stained with ARG67318 anti-GCLM antibody [4G02].



ARG67318 anti-GCLM antibody [4G02] IHC-P image

Immunohistochemistry: Mouse liver stained with ARG67318 anti-GCLM antibody [4G02].
