

## ARG67319 anti-SLC40A1 antibody

Package: 100 µl  
Store at: -20°C

### Summary

Product Description	Rabbit Polyclonal antibody recognizes SLC40A1
Tested Reactivity	Hu, Ms, Rat
Tested Application	WB
Host	Rabbit
Clonality	Polyclonal
Isotype	IgG
Target Name	SLC40A1
Species	Human
Immunogen	KLH-conjugated synthetic peptide of Human SLC40A1
Conjugation	Un-conjugated
Alternate Names	SLC40A1; Solute Carrier Family 40 Member 1; IREG1; FPN1; FPN; SLC11A3; MTP1; HFE4; Solute Carrier Family 11 (Proton-Coupled Divalent Metal Ion Transporters), Member 3; Solute Carrier Family 40 (Iron-Regulated Transporter), Member 1; SLC40 Iron Transporter; Iron Regulated Gene 1; Ferroportin; Iron-Regulated Transporter 1; Ferroportin 1; Ferroportin-1; MSTP079; MST079

### Application Instructions

Application table	Application	Dilution
	WB	1:500-1:2000
Application Note	* The dilutions indicate recommended starting dilutions and the optimal dilutions or concentrations should be determined by the scientist.	
Observed Size	63 kDa	

### Properties

Form	Liquid
Purification	Affinity purification with immunogen
Buffer	0.42% Potassium phosphate (pH 7.3), 0.87% NaCl, 0.01% Sodium azide and 30% Glycerol.
Preservative	0.01% Sodium azide
Stabilizer	30% Glycerol
Storage instruction	For continuous use, store undiluted antibody at 2-8°C for up to a week. For long-term storage, aliquot and store at -20°C or below. Storage in frost free freezers is not recommended. Avoid repeated freeze/thaw cycles. Suggest spin the vial prior to opening. The antibody solution should be gently mixed before use.
Note	For laboratory research only, not for drug, diagnostic or other use.

## Bioinformation

---

Gene Symbol	SLC40A1
Gene Full Name	Solute Carrier Family 40 Member 1
Background	The protein encoded by this gene is a cell membrane protein that may be involved in iron export from duodenal epithelial cells. Defects in this gene are a cause of hemochromatosis type 4 (HFE4). [provided by RefSeq, Jul 2008]
Function	Transports Fe(2+) from the inside of a cell to the outside of the cell, playing a key role for maintaining systemic iron homeostasis. [UniProt]
Calculated Mw	62 kDa
PTM	Glycoprotein; Ubl conjugation. [UniProt]
Cellular Localization	Cell membrane. [UniProt]

## Images



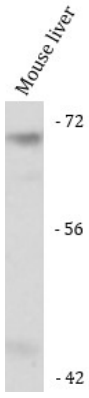
ARG67319 anti-SLC40A1 antibody WB image

Western blot: HeLa stained with ARG67319 anti-SLC40A1 antibody.



ARG67319 anti-SLC40A1 antibody WB image

Western blot: Rat liver stained with ARG67319 anti-SLC40A1 antibody.



### ARG67319 anti-SLC40A1 antibody WB image

Western blot: Mouse liver stained with ARG67319 anti-SLC40A1 antibody.