

ARG70024 anti-Cytokeratin 8 antibody (PE)

Package: 50 µg
Store at: 4°C

Summary

Product Description	RPE-conjugated Rabbit Polyclonal antibody recognizes Cytokeratin 8
Tested Reactivity	Hu
Tested Application	FACS, ICC/IF, IHC-P
Host	Rabbit
Clonality	Polyclonal
Isotype	IgG
Target Name	Cytokeratin 8
Species	Human
Immunogen	Recombinant protein around aa. 1-483 of Human Cytokeratin 8.
Conjugation	PE
Alternate Names	Keratin, type II cytoskeletal 8; KO; CYK8; CK-8; Type-II keratin Kb8; K2C8; CARD2; Keratin-8; K8; CK8; Cytokeratin-8

Application Instructions

Application table	Application	Dilution
	FACS	Assay-dependent
	ICC/IF	5 µg/ml
	IHC-P	Assay-dependent
Application Note	* The dilutions indicate recommended starting dilutions and the optimal dilutions or concentrations should be determined by the scientist.	

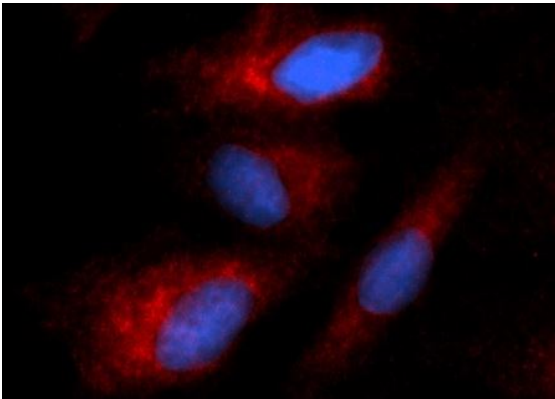
Properties

Form	Powder
Purification	Affinity purified.
Reconstitution	Reconstitute the antibody with 0.4 ml of distilled water to produce a 75 µg/ml solution. Allow the antibody to sit for 10 minutes with gentle agitation prior to use. Use the antibody within 30 days of reconstitution.
Storage instruction	Aliquot and store in the dark at 2-8°C. Keep protected from prolonged exposure to light. Avoid repeated freeze/thaw cycles. Suggest spin the vial prior to opening. The antibody solution should be gently mixed before use.
Note	For laboratory research only, not for drug, diagnostic or other use.

Bioinformation

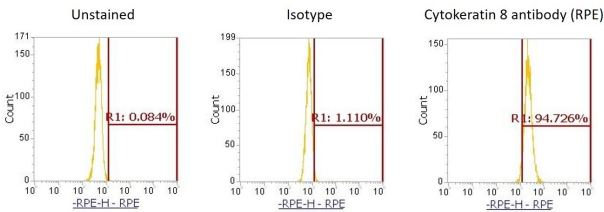
Gene Symbol	KRT8
Gene Full Name	keratin 8, type II
Background	This gene is a member of the type II keratin family clustered on the long arm of chromosome 12. Type I and type II keratins heteropolymerize to form intermediate-sized filaments in the cytoplasm of epithelial cells. The product of this gene typically dimerizes with keratin 18 to form an intermediate filament in simple single-layered epithelial cells. This protein plays a role in maintaining cellular structural integrity and also functions in signal transduction and cellular differentiation. Mutations in this gene cause cryptogenic cirrhosis. Alternatively spliced transcript variants have been found for this gene. [provided by RefSeq, Jan 2012]
Function	Together with KRT19, helps to link the contractile apparatus to dystrophin at the costameres of striated muscle. [UniProt]
Calculated Mw	54 kDa
PTM	<p>Phosphorylation on serine residues is enhanced during EGF stimulation and mitosis. Ser-74 phosphorylation plays an important role in keratin filament reorganization.</p> <p>O-glycosylated. O-GlcNAcylation at multiple sites increases solubility, and decreases stability by inducing proteasomal degradation.</p> <p>O-glycosylated (O-GlcNAcylated), in a cell cycle-dependent manner. [UniProt]</p>

Images



ARG70024 anti-Cytokeratin 8 antibody (PE) ICC/IF image

Immunofluorescence: HeLa cells stained with ARG70024 anti-Cytokeratin 8 antibody (PE) at 5 µg/ml dilution.



ARG70024 anti-Cytokeratin 8 antibody (PE) FACS image

Flow Cytometry: A549 cells unstained (left), stained with isotype control antibody (middle) or ARG70024 anti-Cytokeratin 8 antibody (PE) (right).