

ARG70240 Human CD25 recombinant protein (His-tagged, C-ter)

Package: 100 µg
Store at: -20°C

Summary

| | |
|---------------------|---|
| Product Description | HEK293 expressed, His-tagged (C-ter) Human CD25 recombinant protein. |
| Tested Reactivity | Hu |
| Tested Application | Binding, SDS-PAGE |
| Target Name | CD25 |
| Species | Human |
| A.A. Sequence | Glu22 - Cys213 of Human CD25 (NP_000408.1) with 6X His tag at the C - terminus. |
| Expression System | HEK293 |
| Alternate Names | IL-2-RA; IL-2 receptor subunit alpha; CD25; TCGFR; TAC antigen; IL2R; CD antigen CD25; Interleukin-2 receptor subunit alpha; IL-2R subunit alpha; p55; IL2-RA; IDDM10 |

Application Instructions

| | |
|------------------|---|
| Application Note | Binding activity test: Measured by its binding ability in a functional ELISA. Immobilized Recombinant human IL2R at 2 µg/ml (100 µl/well) can bind Recombinant human IL2 with a linear range of 5-30 ng/ml. |
|------------------|---|

Properties

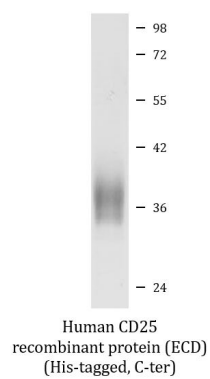
| | |
|---------------------|---|
| Form | Powder |
| Purification Note | 0.22 µm filter sterilized. Endotoxin level is 97% (by SDS-PAGE) |
| Buffer | PBS (pH 7.4) |
| Reconstitution | Reconstitute to a concentration of 0.1 - 0.5 mg/ml in sterile distilled water. |
| Storage instruction | For long term, lyophilized protein should be stored at -20°C or -80°C. After reconstitution, aliquot and store at -20°C for up to one month, at 2-8°C for up to one week. Storage in frost free freezers is not recommended. Avoid repeated freeze/thaw cycles. Suggest spin the vial prior to opening. |
| Note | For laboratory research only, not for drug, diagnostic or other use. |

Bioinformation

| | |
|----------------|--|
| Gene Symbol | IL2RA |
| Gene Full Name | interleukin 2 receptor, alpha |
| Background | The interleukin 2 (IL2) receptor alpha (IL2RA) and beta (IL2RB) chains, together with the common gamma chain (IL2RG), constitute the high-affinity IL2 receptor. Homodimeric alpha chains (IL2RA) result in low-affinity receptor, while homodimeric beta (IL2RB) chains produce a medium-affinity receptor. Normally an integral-membrane protein, soluble IL2RA has been isolated and determined to result from extracellular proteolysis. Alternately-spliced IL2RA mRNAs have been isolated, but the significance of each is presently unknown. Mutations in this gene are associated with interleukin 2 receptor alpha deficiency. [provided by RefSeq, Nov 2009] |

| | |
|-----------------------|---|
| Function | Receptor for interleukin-2. The receptor is involved in the regulation of immune tolerance by controlling regulatory T cells (TREGs) activity. TREGs suppress the activation and expansion of autoreactive T-cells. [UniProt] |
| Calculated Mw | 31 kDa |
| Cellular Localization | Membrane; Single-pass type I membrane protein. [UniProt] |

Images



ARG70240 Human CD25 recombinant protein (ECD) (His-tagged, C-ter) SDS-PAGE image

SDS-PAGE analysis of ARG70240 Human CD25 recombinant protein (ECD) (His-tagged, C-ter).