

## ARG70261 Human CD38 recombinant protein (His-tagged, C-ter)

Package: 50 µg  
Store at: -20°C

### Summary

Product Description	HEK293 expressed, His-tagged (C-ter) Human CD38 recombinant protein.
Tested Reactivity	Hu
Tested Application	Binding, ELISA, SDS-PAGE
Target Name	CD38
Species	Human
A.A. Sequence	Val43 - Ile300 of Human CD38 (NP_001766.2) with 6X His tag at the C - terminus.
Expression System	HEK293
Alternate Names	cADPr hydrolase 1; ADPRC 1; EC 3.2.2.6; 2'-phospho-ADP-ribosyl cyclase/2'-phospho-cyclic-ADP-ribose transferase; Cyclic ADP-ribose hydrolase 1; ADPRC1; EC 2.4.99.20; ADP-ribosyl cyclase 1; 2'-phospho-cyclic-ADP-ribose transferase; CD antigen CD38; T10; 2'-phospho-ADP-ribosyl cyclase; ADP-ribosyl cyclase/cyclic ADP-ribose hydrolase 1

### Application Instructions

Application Note	Binding activity test: Measured by its binding ability in a functional ELISA. Immobilized recombinant human CD38 at 0.5 µg/ml (100 µl/well) can bind CD38 antibody with a linear range of 2-10 ng/ml.
------------------	---

### Properties

Form	Powder
Purification Note	0.22 µm filter sterilized. Endotoxin level is 95% (by SDS-PAGE)
Buffer	PBS (pH 7.4)
Reconstitution	Reconstitute to a concentration of 0.1 - 0.5 mg/ml in sterile distilled water.
Storage instruction	For long term, lyophilized protein should be stored at -20°C or -80°C. After reconstitution, aliquot and store at -20°C for up to one month, at 2-8°C for up to one week. Storage in frost free freezers is not recommended. Avoid repeated freeze/thaw cycles. Suggest spin the vial prior to opening.
Note	For laboratory research only, not for drug, diagnostic or other use.

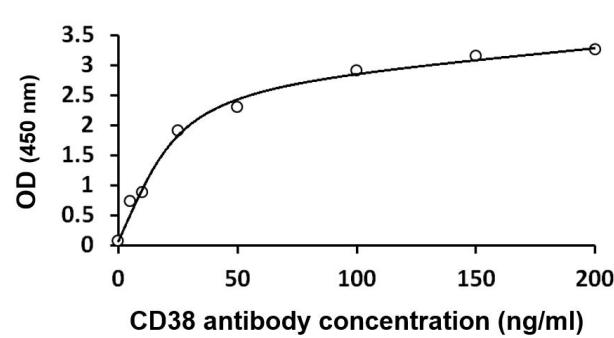
### Bioinformation

Gene Symbol	CD38
Gene Full Name	CD38 molecule
Background	The protein encoded by this gene is a non-lineage-restricted, type II transmembrane glycoprotein that synthesizes and hydrolyzes cyclic adenosine 5'-diphosphate-ribose, an intracellular calcium ion mobilizing messenger. The release of soluble protein and the ability of membrane-bound protein to become internalized indicate both extracellular and intracellular functions for the protein. This protein has an N-terminal cytoplasmic tail, a single membrane-spanning domain, and a C-terminal extracellular region with four N-glycosylation sites. Crystal structure analysis demonstrates that the functional

molecule is a dimer, with the central portion containing the catalytic site. It is used as a prognostic marker for patients with chronic lymphocytic leukemia. Alternative splicing results in multiple transcript variants. [provided by RefSeq, Sep 2015]

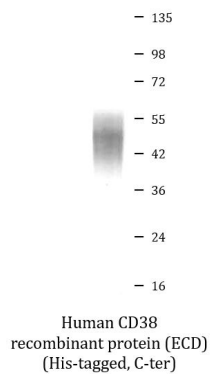
Function	Synthesizes the second messengers cyclic ADP-ribose and nicotinate-adenine dinucleotide phosphate, the former a second messenger for glucose-induced insulin secretion. Also has cADPr hydrolase activity. Also moonlights as a receptor in cells of the immune system. [UniProt]
Calculated Mw	34 kDa
Cellular Localization	Membrane; Single-pass type II membrane protein. [UniProt]

Images



ARG70261 Human CD38 recombinant protein (ECD) (His-tagged, C-ter) ELISA image

ELISA: The plate was coated with ARG70261 Human CD38 recombinant protein (ECD) (His-tagged, C-ter) at 0.5 µg/ml (100 µl/well). Samples were detected with serially diluted anti-CD38 antibody.



ARG70261 Human CD38 recombinant protein (ECD) (His-tagged, C-ter) SDS-PAGE image

SDS-PAGE analysis of ARG70261 Human CD38 recombinant protein (ECD) (His-tagged, C-ter).