

## ARG70420 Human CCL2 / MCP1 recombinant protein (Active) (His-tagged, N-ter)

Package: 100 µg, 20 µg  
Store at: -20°C

### Summary

Product Description	E. coli expressed, His-tagged (N-ter) Active Human CCL2 / MCP1 recombinant protein
Tested Application	SDS-PAGE
Target Name	CCL2 / MCP1
Species	Human
A.A. Sequence	Gln24 - Thr99
Expression System	E. coli
Activity	Active
Activity Note	Determined by its ability to chemoattract BaF3 cells transfected with human CCR2A. The ED50 for this effect is < 20 ng/mL.
Alternate Names	CCL2; C-C Motif Chemokine Ligand 2; MCP-1; MCP1; MCAF; HC11; Monocyte Chemotactic And Activating Factor Monocyte Secretory Protein JE; SMC-CF; GDCF-2; SCYA2

### Properties

Form	Powder
Purification Note	Endotoxin level is less than 0.1 EU/µg of the protein, as determined by the LAL test.
Purity	> 95% (by SDS-PAGE)
Buffer	PBS (pH 7.4)
Reconstitution	It is recommended to reconstitute the lyophilized protein in sterile water to a concentration not less than 200 µg/mL and incubate the stock solution for at least 20 min at room temperature to make sure the protein is dissolved completely.
Storage instruction	For long term, lyophilized protein should be stored at -20°C or -80°C. After reconstitution, aliquot and store at -20°C or -80°C for up to one month. Storage in frost free freezers is not recommended. Avoid repeated freeze/thaw cycles. Suggest spin the vial prior to opening.
Note	For laboratory research only, not for drug, diagnostic or other use.

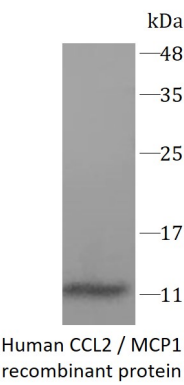
### Bioinformation

Gene Symbol	CCL2
Gene Full Name	C-C Motif Chemokine Ligand 2
Background	This gene is one of several cytokine genes clustered on the q-arm of chromosome 17. Chemokines are a superfamily of secreted proteins involved in immunoregulatory and inflammatory processes. The superfamily is divided into four subfamilies based on the arrangement of N-terminal cysteine residues of the mature peptide. This chemokine is a member of the CC subfamily which is characterized by two adjacent cysteine residues. This cytokine displays chemotactic activity for monocytes and basophils but not for neutrophils or eosinophils. It has been implicated in the pathogenesis of diseases characterized by monocytic infiltrates, like psoriasis, rheumatoid arthritis and atherosclerosis. It binds to chemokine receptors CCR2 and CCR4. Elevated expression of the encoded protein is associated with severe acute respiratory syndrome coronavirus 2 (SARS-CoV-2) infection.

Function	Signals through binding and activation of CCR2 and induces a strong chemotactic response and mobilization of intracellular calcium ions.
PTM	Disulfide bond, Glycoprotein, Pyrrolidone carboxylic acid
Cellular Localization	Secreted

Images

---



ARG70420 Human CCL2 / MCP1 recombinant protein (Active) (His-tagged, N-ter) SDS-PAGE image

SDS-PAGE analysis of Human CCL2 / MCP1 recombinant protein (Active) (His-tagged, N-ter)