

ARG70422 Human CCL4 / MIP1 beta recombinant protein (Active) (Tag Free)

Package: 100 µg, 20 µg
Store at: -20°C

Summary

Product Description	E. coli expressed, Active Human CCL4 recombinant protein
Tested Application	SDS-PAGE
Target Name	CCL4 / MIP1 beta
Species	Human
A.A. Sequence	Ala24 - Asn92
Expression System	E. coli
Activity	Active
Activity Note	Determined by its ability to chemoattract BaF3 cells transfected with human CCR5. The ED50 for this effect is < 10 ng/mL.
Alternate Names	CCL4; C-C Motif Chemokine Ligand 4; MIP-1-Beta; AT744.1; SCYA4; LAG1; Small Inducible Cytokine A4 (Homologous To Mouse Mip-1b); Macrophage Inflammatory Protein 1-Beta; Lymphocyte Activation Gene 1 Protein; G-26 T-Lymphocyte-Secreted Protein; Chemokine (C-C Motif) Ligand 4; T-Cell Activation Protein 2; C-C Motif Chemokine 4; MIP-1-Beta(1-69); SIS-Gamma

Properties

Form	Powder
Purification Note	Endotoxin level is less than 0.1 EU/µg of the protein, as determined by the LAL test.
Purity	> 98% (by SDS-PAGE)
Buffer	50 mM Tris and 150 mM NaCl (pH 8.5)
Reconstitution	It is recommended to reconstitute the lyophilized protein in sterile water to a concentration not less than 200 µg/mL and incubate the stock solution for at least 20 min at room temperature to make sure the protein is dissolved completely.
Storage instruction	For long term, lyophilized protein should be stored at -20°C or -80°C. After reconstitution, aliquot and store at -20°C or -80°C for up to one month. Storage in frost free freezers is not recommended. Avoid repeated freeze/thaw cycles. Suggest spin the vial prior to opening.
Note	For laboratory research only, not for drug, diagnostic or other use.

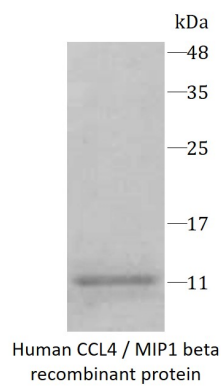
Bioinformation

Gene Symbol	CCL4
Gene Full Name	C-C Motif Chemokine Ligand 4
Background	The protein encoded by this gene is a mitogen-inducible monokine and is one of the major HIV-suppressive factors produced by CD8+ T-cells. The encoded protein is secreted and has chemokinetic and inflammatory functions.
Function	Monokine with inflammatory and chemokinetic properties. Binds to CCR5. One of the major HIV-suppressive factors produced by CD8+ T-cells. Recombinant MIP-1-beta induces a dose-dependent inhibition of different strains of HIV-1, HIV-2, and simian immunodeficiency virus (SIV). The processed

form MIP-1-beta(3-69) retains the abilities to induce down-modulation of surface expression of the chemokine receptor CCR5 and to inhibit the CCR5-mediated entry of HIV-1 in T-cells. MIP-1-beta(3-69) is also a ligand for CCR1 and CCR2 isoform B.

PTM	Disulfide bond
Cellular Localization	Secreted

Images



ARG70422 Human CCL4 / MIP1 beta recombinant protein (Active) (Tag Free) SDS-PAGE image

SDS-PAGE analysis of ARG70422 Human CCL4 / MIP1 beta recombinant protein (Active) (Tag Free)