

ARG80174 Human CCL4 / MIP-1 beta ELISA Kit

Package: 96 wells
Store at: 4°C

Component

Cat. No.	Component Name	Package	Temp
ARG80174-001	Antibody-coated microplate	8 X 12 strips	4°C. Unused strips should be sealed tightly in the air-tight pouch.
ARG80174-002	Standard (Lyophilized)	3 X 0.5 ng/vial	4°C
ARG80174-003	Standard diluent buffer	20 ml	4°C
ARG80174-004	Antibody conjugate concentrate	400 µl	4°C
ARG80174-005	Antibody diluent buffer	16 ml	4°C
ARG80174-006	HRP-Streptavidin concentrate	400 µl	4°C (Protect from light)
ARG80174-007	HRP-Streptavidin diluent buffer	16 ml	4°C
ARG80174-008	20X Wash buffer	50 ml	4°C
ARG80174-009	TMB substrate	12ml	4°C (Protect from light)
ARG80174-010	STOP solution	12ml	4°C
ARG80174-011	Plate sealer	4 strips	Room temperature

Summary

Product Description	ARG80174 Human CCL4 / MIP-1 beta ELISA Kit is an Enzyme Immunoassay kit for the quantification of Human CCL4 / MIP-1 beta in serum, plasma and cell culture supernatants.
Tested Reactivity	Hu
Tested Application	ELISA
Specificity	No significant cross-reactivity or interference with Human GRO alpha, GRO beta, GRO gamma, MCP-1, MIP-1 beta, RANTES, MIP-3 alpha, MIP-3 beta
Target Name	CCL4 / MIP1 beta
Conjugation	HRP
Conjugation Note	Substrate: TMB and read at 450 nm
Sensitivity	3.9 pg/ml
Sample Type	Serum, plasma and cell culture supernatants.
Standard Range	7.8 - 500 pg/ml

Sample Volume	100 μ l
Precision	CV:
Alternate Names	SCYA4L; Lymphocyte activation gene 1 protein; MIP-1-beta; Macrophage inflammatory protein 1-beta; LAG-1; LAG1; CCL4L; Monocyte adherence-induced protein 5-alpha; Small-inducible cytokine A4-like; SCYA4L1; C-C motif chemokine 4-like; AT744.2

Application Instructions

Assay Time	4 hours
------------	---------

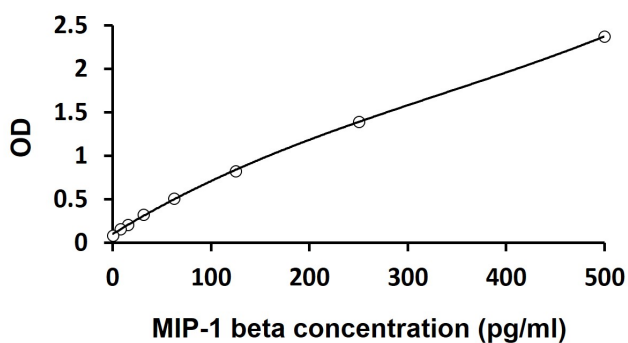
Properties

Form	96 well
Storage instruction	Store the kit at 2-8°C. Keep microplate wells sealed in a dry bag with desiccants. Do not expose test reagents to heat, sun or strong light during storage and usage. Please refer to the product user manual for detail temperatures of the components.
Note	For laboratory research only, not for drug, diagnostic or other use.

Bioinformation

Gene Symbol	CCL4L1
Gene Full Name	chemokine (C-C motif) ligand 4-like 1
Background	Murine macrophage inflammatory protein-1 beta (MIP-1beta) is a 7.8 kDa protein containing 69 amino acid residues. It plays an important role in the inflammatory response of blood monocytes and tissue macrophages.
Resrarch Area	Immune System kit

Images



ARG80174 Human CCL4 / MIP-1 beta ELISA Kit standard curve image

ARG80174 Human CCL4 / MIP-1 beta ELISA Kit results of a typical standard run with optical density reading at 450 nm.