

ARG80221 Mouse CXCL2 / MIP2 ELISA Kit

Package: 96 wells
Store at: 4°C

Component

Cat. No.	Component Name	Package	Temp
ARG80221-001	Antibody-coated microplate	8 X 12 strips	4°C. Unused strips should be sealed tightly in the air-tight pouch.
ARG80221-002	Standard (Lyophilized)	3 X 1 ng/vial	4°C
ARG80221-003	Standard diluent buffer	20 ml	4°C
ARG80221-004	Antibody conjugate concentrate	400 µl	4°C
ARG80221-005	Antibody diluent buffer	16 ml	4°C
ARG80221-006	HRP-Streptavidin concentrate	400 µl	4°C (Protect from light)
ARG80221-007	HRP-Streptavidin diluent buffer	16 ml	4°C
ARG80221-008	20X Wash buffer	50 ml	4°C
ARG80221-009	TMB substrate	12ml	4°C (Protect from light)
ARG80221-010	STOP solution	12ml	4°C
ARG80221-011	Plate sealer	4 strips	Room temperature

Summary

Product Description	ARG80221 Mouse CXCL2 / MIP2 ELISA Kit is an Enzyme Immunoassay kit for the quantification of Mouse CXCL2 / MIP2 in Serum, Plasma, Cell culture supernatants.
Tested Reactivity	Ms
Tested Application	ELISA
Specificity	No significant cross-reactivity or interference with Mouse CXCL-16, IP-10, JE, KC, LIX, MIG, MIP-1 alpha, MIP-1 beta, MIP-1 gamma, MIP-3 alpha, MIP-3 beta, SDF-1 alpha, SDF-1 beta,
Target Name	CXCL2 / MIP2
Conjugation	HRP
Conjugation Note	Substrate: TMB and read at 450 nm
Sensitivity	4 pg/ml
Sample Type	Serum, Plasma, Cell culture supernatants
Standard Range	7.8 - 500 pg/ml

Sample Volume	100 µl
Precision	CV: less than 10%
Alternate Names	Gro-beta; SCYB2; HSF; CINC-2a; GROb; MGSA-b; SB-251353; MIP2A; MIP2; Hematopoietic synergistic factor; 5-73; C-X-C motif chemokine 2; MIP-2a; GRO2; Macrophage inflammatory protein 2-alpha; GRO-beta-T; Growth-regulated protein beta; MIP2-alpha

Application Instructions

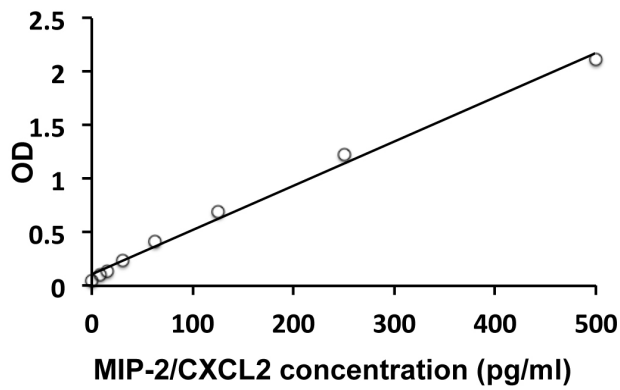
Assay Time	4 hours
------------	---------

Properties

Form	96 well
Storage instruction	Store the kit at 2-8°C. Keep microplate wells sealed in a dry bag with desiccants. Do not expose test reagents to heat, sun or strong light during storage and usage. Please refer to the product user manual for detail temperatures of the components.
Note	For laboratory research only, not for drug, diagnostic or other use.

Bioinformation

Database links	GeneID: 20310 Mouse Swiss-port # P10889 Mouse
Gene Symbol	Cxcl2
Gene Full Name	chemokine (C-X-C motif) ligand 2
Background	Chemokine (C-X-C motif) ligand 2 (CXCL2) is a small cytokine belonging to the CXC chemokine family that is also called macrophage inflammatory protein 2-alpha (MIP2-alpha), Growth-regulated protein beta (Gro-beta) and Gro oncogene-2 (Gro-2). CXCL2 is 90% identical in amino acid sequence as a related chemokine, CXCL1. This chemokine is secreted by monocytes and macrophages and is chemotactic for polymorphonuclear leukocytes and hematopoietic stem cells. The gene for CXCL2 is located on human chromosome 4 in a cluster of other CXC chemokines. CXCL2 mobilizes cells by interacting with a cell surface chemokine receptor called CXCR2.
Highlight	Related products: CXCL antibodies ; CXCL ELISA Kits ; CXCL Duos / Panels ; CXCL recombinant proteins ; New ELISA data calculation tool: Simplify the ELISA analysis by GainData
Research Area	Immune System kit
PTM	The N-terminal processed form GRO-beta(5-73) is produced by proteolytic cleavage after secretion from bone marrow stromal cells.



ARG80221 Mouse CXCL2 / MIP2 ELISA Kit standard curve image

ARG80221 Mouse CXCL2 / MIP2 ELISA Kit results of a typical standard run with optical density reading at 450 nm.