

ARG80461 Human Melatonin ELISA Kit

Package: 96 wells
Store at: 4°C

Summary

| | |
|---------------------|--|
| Product Description | ARG80461 Human Melatonin ELISA Kit is an Enzyme Immunoassay kit for the quantitative determination of melatonin in human serum and plasma. |
| Tested Reactivity | Hu, Ms |
| Tested Application | ELISA |
| Target Name | Melatonin |
| Conjugation | AP |
| Conjugation Note | Substrate: PNPP and read at 405 nm |
| Sensitivity | 1.6 pg/ml |
| Sample Type | Serum, Plasma |
| Standard Range | 3 - 270 pg/ml |
| Sample Volume | 500 µl |

Application Instructions

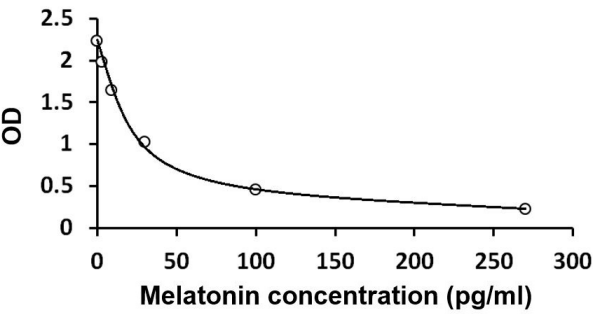
| | |
|------------|---|
| Assay Time | 14-20 h (2-8°C/shaker), 2 h (RT/shaker), 40 min (RT/shaker) |
|------------|---|

Properties

| | |
|---------------------|--|
| Form | 96 well |
| Storage instruction | Store the kit at 2-8°C. Keep microplate wells sealed in a dry bag with desiccants. Do not expose test reagents to heat, sun or strong light during storage and usage. Please refer to the product user manual for detail temperatures of the components. |
| Note | For laboratory research only, not for drug, diagnostic or other use. |

Bioinformation

| | |
|---------------|---|
| Highlight | Related products: Melatonin antibodies ; Melatonin ELISA Kits ; Related news: Besides for human, arigo's Melatonin ELISA kit also works for Arabidopsis Baking soda restores circadian clock in tumor cells |
| Research Area | Neuroscience kit |



ARG80461 Human Melatonin ELISA Kit standard curve image

ARG80461 Human Melatonin ELISA Kit results of a typical standard run with optical density reading at 405 nm.