

ARG80497 Human PLGF (Placenta growth factor) ELISA Kit

Package: 96 wells
Store at: 4°C

Summary

Product Description	ARG80497 Human PLGF (Placenta growth factor) ELISA Kit is an Enzyme immunoassay kit for the quantification of human placenta growth factor (PLGF) in serum.
Tested Reactivity	Hu
Tested Application	ELISA
Target Name	PLGF
Conjugation	HRP
Sensitivity	less than 1.062 pg/ml
Sample Type	Serum.
Standard Range	1.06 - 1000 pg/ml
Sample Volume	25 µl
Alternate Names	PGFL; PIGF; PIGF-2; SHGC-10760; Placenta growth factor; D12S1900; PLGF

Application Instructions

Assay Time	30 min, 1 h, 30, 30 min (RT)
------------	------------------------------

Properties

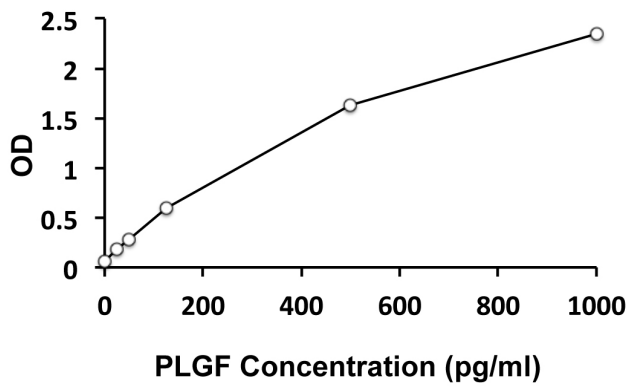
Form	96 well
Storage instruction	Store the kit at 2-8°C. Keep microplate wells sealed in a dry bag with desiccants. Do not expose test reagents to heat, sun or strong light during storage and usage. Please refer to the product user manual for detail temperatures of the components.
Note	For laboratory research only, not for drug, diagnostic or other use.

Bioinformation

Gene Symbol	PGF
Gene Full Name	placental growth factor
Background	This gene encodes a growth factor found in placenta which is homologous to vascular endothelial growth factor. Alternatively spliced transcripts encoding different isoforms have been found for this gene.[provided by RefSeq, Jun 2011]
Function	Growth factor active in angiogenesis and endothelial cell growth, stimulating their proliferation and migration. It binds to the receptor FLT1/VEGFR-1. Isoform PIGF-2 binds NRP1/neuropilin-1 and NRP2/neuropilin-2 in a heparin-dependent manner. Also promotes cell tumor growth. [UniProt]
Highlight	Related products: PLGF antibodies ; PLGF ELISA Kits ; Related news: The role of HDGF in tumor angiogenesis

Research Area	Cancer kit; Cell Biology and Cellular Response kit; Metabolism kit
PTM	N-glycosylated.

Images



ARG80497 Human PLGF (Placenta growth factor) ELISA Kit standard curve image

ARG80497 Human PLGF (Placenta growth factor) ELISA Kit results of a typical standard.