

ARG80601 Human Respiratory syncytial virus (RSV) IgM antibody ELISA Kit

Package: 96 wells

Store at: 4°C

Summary

Product Description	ARG80601 Human Respiratory syncytial virus (RSV) IgM antibody ELISA Kit has been designed for the determination of specific IgM antibodies against Respiratory syncytial virus in serum and plasma (EDTA, heparin).
Tested Reactivity	Hu
Tested Application	ELISA
Target Name	Respiratory syncytial virus IgA antibody
Sensitivity	1.70 U/ml
Sample Type	Serum and plasma (EDTA, heparin).
Standard Range	1 - 150 U/ml
Sample Volume	5 µl

Application Instructions

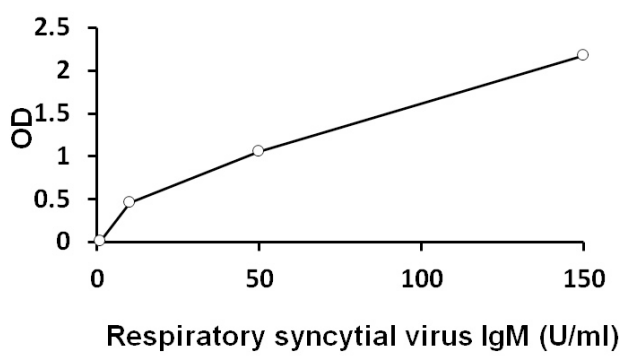
Assay Time	1 h, 30, 20 min
------------	-----------------

Properties

Form	96 well
Storage instruction	Store the kit at 2-8°C. Keep microplate wells sealed in a dry bag with desiccants. Do not expose test reagents to heat, sun or strong light during storage and usage. Please refer to the product user manual for detail temperatures of the components.
Note	For laboratory research only, not for drug, diagnostic or other use.

Bioinformation

Research Area	Microbiology and Infectious Disease kit
---------------	---



ARG80601 Human Respiratory syncytial virus (RSV) IgM antibody
ELISA Kit standard curve image

ARG80601 Human Respiratory syncytial virus (RSV) IgM antibody
ELISA Kit results of a typical standard.