

ARG80655 Rat Insulin ELISA Kit

Package: 96 wells
Store at: 4°C

Summary

Product Description	ARG80655 Rat Insulin ELISA Kit is an Enzyme Immunoassay kit for the quantification of Rat Insulin in serum and plasma (EDTA).
Tested Reactivity	Rat
Tested Application	ELISA
Target Name	Insulin
Conjugation	HRP
Sensitivity	0.093 ng/ml
Sample Type	Serum and plasma (EDTA).
Standard Range	0.156 - 10 ng/ml
Sample Volume	50 µl
Alternate Names	IDDM; IDDM2; IDDM1; ILPR; MODY10; Insulin; IRDN

Application Instructions

Assay Time	1h, 1h (RT/shaking), 30 min
------------	-----------------------------

Properties

Form	96 well
Storage instruction	Store the kit at 2-8°C. Keep microplate wells sealed in a dry bag with desiccants. Do not expose test reagents to heat, sun or strong light during storage and usage. Please refer to the product user manual for detail temperatures of the components.
Note	For laboratory research only, not for drug, diagnostic or other use.

Bioinformation

Gene Symbol	Ins1
Gene Full Name	insulin 1
Background	After removal of the precursor signal peptide, proinsulin is post-translationally cleaved into three peptides: the B chain and A chain peptides, which are covalently linked via two disulfide bonds to form insulin, and C-peptide. Binding of insulin to the insulin receptor (INSR) stimulates glucose uptake. A multitude of mutant alleles with phenotypic effects have been identified. There is a read-through gene, INS-IGF2, which overlaps with this gene at the 5' region and with the IGF2 gene at the 3' region. Alternative splicing results in multiple transcript variants. [provided by RefSeq, Jun 2010]
Function	Insulin decreases blood glucose concentration. It increases cell permeability to monosaccharides, amino acids and fatty acids. It accelerates glycolysis, the pentose phosphate cycle, and glycogen synthesis in liver. [UniProt]

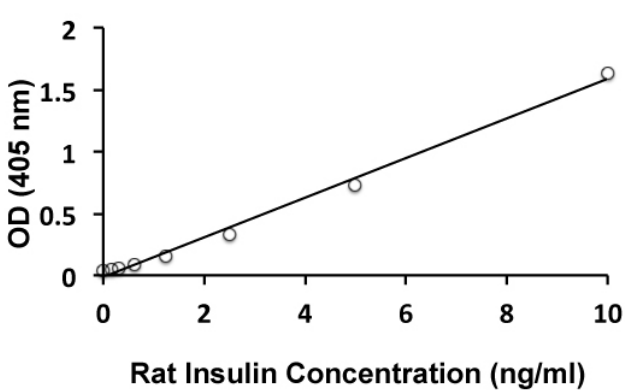
Highlight

Related products:
[Insulin antibodies](#); [Insulin ELISA Kits](#); [Insulin Duos / Panels](#); [Insulin recombinant proteins](#);
New ELISA data calculation tool:
[Simplify the ELISA analysis by GainData](#)

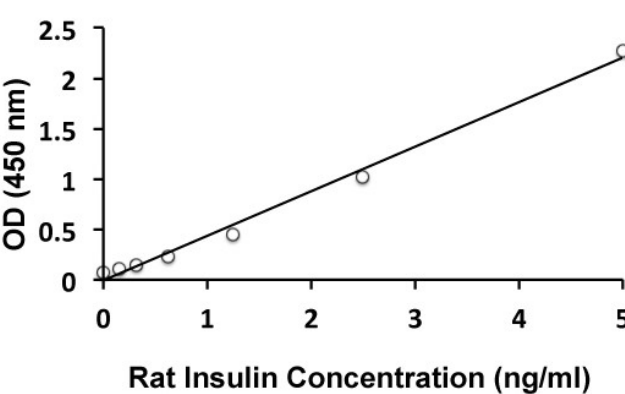
Research Area

Cell Biology and Cellular Response kit; Metabolism kit; Neuroscience kit; Signaling Transduction kit

Images



ARG80655 Rat Insulin ELISA Kit standard curve image
ARG80655 Rat Insulin ELISA Kit results of a typical standard run with optical density reading at 405nm.



ARG80655 Rat Insulin ELISA Kit standard curve image
ARG80655 Rat Insulin ELISA Kit results of a typical standard run with optical density reading at 450 nm.