

ARG80774 Human total IgE ELISA Kit

Package: 96 wells
Store at: 4°C

Summary

Product Description	ARG80774 Human total IgE ELISA Kit has been designed for the quantification of total IgE antibodies in serum and plasma (EDTA, heparin).
Tested Reactivity	Hu
Tested Application	ELISA
Target Name	IgE
Conjugation	HRP
Conjugation Note	Substrate: TMB and read at 450 nm
Sensitivity	0.8 IU/ml
Sample Type	Serum and plasma (EDTA, heparin).
Standard Range	5 - 1,000 IU/ml
Sample Volume	10 µl
Alternate Names	Immunoglobulin E

Application Instructions

Assay Time	30, 15 min
------------	------------

Properties

Form	96 well
Storage instruction	Store the kit at 2-8°C. Keep microplate wells sealed in a dry bag with desiccants. Do not expose test reagents to heat, sun or strong light during storage and usage. Please refer to the product user manual for detail temperatures of the components.
Note	For laboratory research only, not for drug, diagnostic or other use.

Bioinformation

Gene Full Name	Human total IgE
Background	<p>The existence of IgE in man as a unique class of immunoglobulins which are important in the mediation of the allergic response has been known for over twenty years. The mechanism of action involves an initial antigenic stimulation of immunocompetent B lymphocytes by a specific antigen, a process which induces the lymphocyte to respond by producing specific antibody of several classes.</p> <p>One class, reagenic or IgE antibody, becomes partially bound via its Fc portion to receptors on the surface of mast cells and basophilic leukocytes. Upon further stimulation by specific allergens, these cell-bound IgE molecules bind via their Fab portion to the allergen. This combination triggers the mast cells and basophilic leucocytes to release various vasoactive amines into the blood and the surrounding tissue. These substances cause smooth muscle constriction and lead ultimately to allergic conditions such as wheal and flare reactions, hives, dermatitis, rhinitis, hay fever, asthma and anaphylactic shock. IgE determinations are most valuable in the diagnostic assessment of patients with established or</p>

suspected allergic disease. In normal subjects, IgE values are related to age, with normal values peaking around 10 - 14 years. Infants and children with family history of atopic allergy are at increased risk of developing disease and constitute a prime population for screening. Studies have shown that conditions such as asthma, rhinitis, eczema, urticaria, dermatitis and some parasitic infections lead to increased IgE levels. Asthma, hay fever and atopic eczema patients may produce levels 3 - 10 times those of normal patients.

Highlight

Related products:

[Human total IgE ELISA Kits:](#)

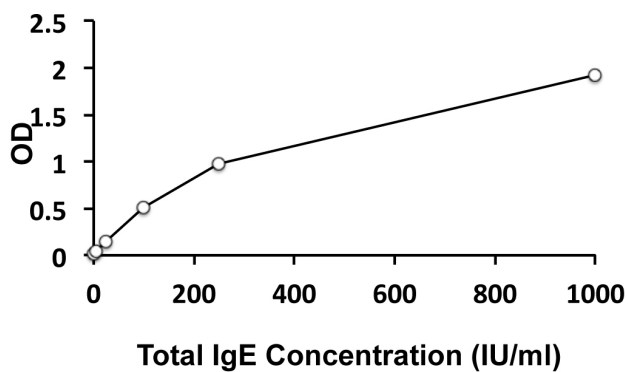
New ELISA data calculation tool:

[Simplify the ELISA analysis by GainData](#)

Research Area

Immune System kit

Images



ARG80774 Human total IgE ELISA Kit standard curve image

ARG80774 Human total IgE ELISA Kit results of a typical standard run with optical density reading at 450nm.