

ARG80784 Human PAPP A ELISA Kit

Package: 96 wells
Store at: 4°C

Summary

Product Description	ARG80784 Human PAPP A ELISA Kit is an Enzyme Immunoassay kit for the quantification of Human PAPP A in serum and plasma (EDTA, heparin, citrate).
Tested Reactivity	Hu
Tested Application	ELISA
Target Name	PAPP A
Conjugation	HRP
Conjugation Note	Substrate: TMB and read at 450 nm
Sensitivity	0.133 µg/ml
Sample Type	Serum and plasma (EDTA, heparin, citrate).
Standard Range	1 - 30 µg/ml
Sample Volume	10 µl
Alternate Names	DIPLA1; Pappalysin-1; Insulin-like growth factor-dependent IGF-binding protein 4 protease; PAPPA1; IGFBP-4ase; Pregnancy-associated plasma protein A; PAPA; IGF-dependent IGFBP-4 protease; EC 3.4.24.79; PAPP-A; ASBABP2

Application Instructions

Assay Time	2 x 30 min, 15 min
------------	--------------------

Properties

Form	96 well
Storage instruction	Store the kit at 2-8°C. Keep microplate wells sealed in a dry bag with desiccants. Do not expose test reagents to heat, sun or strong light during storage and usage. Please refer to the product user manual for detail temperatures of the components.
Note	For laboratory research only, not for drug, diagnostic or other use.

Bioinformation

Database links	GeneID: 5069 Human Swiss-port # Q13219 Human
Gene Symbol	PAPPA
Gene Full Name	pregnancy-associated plasma protein A, pappalysin 1
Background	PAPP-A is a protein produced by the developing placenta. Its concentration in the maternal blood increases rapidly after the 7th week of pregnancy. The measurement of PAPP-A in the first trimester of pregnancy has been reported as a useful marker in antenatal screening for Down Syndrome and other fetal aneuploidies. Reduced PAPP-A values in combination with maternal age, the measurement of free

β -HCG and the ultrasonic determination of nuchal translucency (NT) in pregnancy weeks 11 to 14 may detect up to 90 % of pregnancies with Down syndrom.

Highlight

Related products:

[PAPP A antibodies](#); [PAPP A ELISA Kits](#); [PAPP A Duos / Panels](#);

New ELISA data calculation tool:

[Simplify the ELISA analysis by GainData](#)

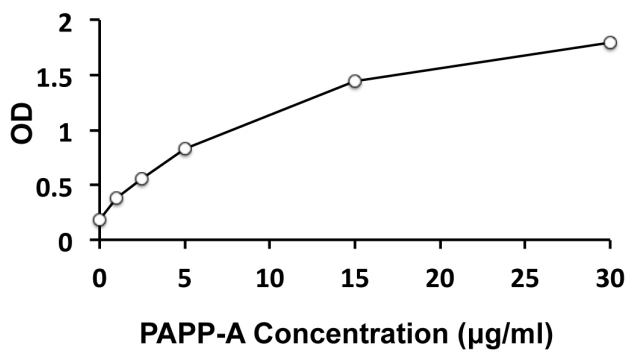
Research Area

Cell Biology and Cellular Response kit

PTM

There appear to be no free sulfhydryl groups.

Images



ARG80784 Human PAPP A ELISA Kit standard curve example image

The representative standard curve of ARG80784 Human PAPP A ELISA Kit. The standard curve is for demonstration only and cannot be used in place of data generations at the time of assay. The standard curve should be generated each time the assay is performed.