

ARG80796 Chicken Egg White proteins ELISA Kit

Package: 96 wells
Store at: 4°C

Summary

Product Description	ARG80796 Chicken Egg White proteins ELISA Kit is an Enzyme Immunoassay kit for the quantification of Chicken Egg White proteins in food (extraction, dilution).
Tested Reactivity	Chk
Tested Application	ELISA
Target Name	Egg White proteins
Conjugation	HRP
Conjugation Note	Substrate: TMB and read at 450 nm
Sensitivity	0.05 ppm
Sample Type	Food (extraction, dilution).
Standard Range	0.4 - 10 ppm
Sample Volume	100 µl

Application Instructions

Assay Time	20, 20 min (RT), 20 min (RT/dark)
------------	-----------------------------------

Properties

Form	96 well
Storage instruction	Store the kit at 2-8°C. Keep microplate wells sealed in a dry bag with desiccants. Do not expose test reagents to heat, sun or strong light during storage and usage. Please refer to the product user manual for detail temperatures of the components.
Note	For laboratory research only, not for drug, diagnostic or other use.

Bioinformation

Gene Full Name	Egg White proteins
Background	<p>Hen's egg (<i>Gallus gallus</i>) is very rich of proteins and represents an important food source for humans. While proteins of egg yolk only have minor allergenicity, many proteins of egg white are known to be allergenic. In addition to ovalbumin, ovotransferrin, lysozyme and livetin, ovomucoid represents the most important allergen. Unlike the other allergens ovomucoid is heat stable and can resist common production processes like baking. For allergic persons the consumption of egg white represents a critical problem. Already very low amounts of the allergen can cause allergic reactions, which may lead to anaphylactic shock in severe cases. Because of this, egg allergic persons must strictly avoid the consumption of eggs or egg containing food. Non-declared addition of egg in food is hazardous for allergic people. Crosscontamination, mostly in consequence of the production process is often noticed. The chocolate production process is a representative example. For the detection of egg white protein residues, sensitive detection systems are required.</p>

The Egg White ELISA represents a highly sensitive detection system for egg white protein based on

ovomucoid and is particularly capable of the quantification of egg white residues in pasta, bakery products, sausage and chocolate.

Highlight

Related products:

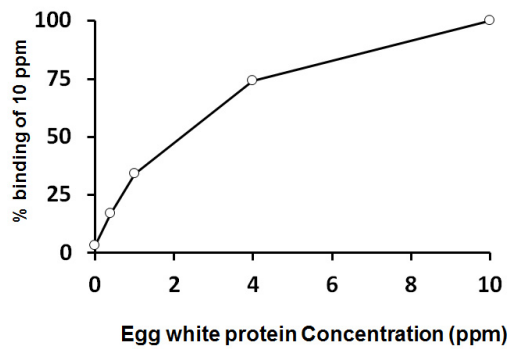
New ELISA data calculation tool:

[Simplify the ELISA analysis by GainData](#)

Research Area

Immune System kit

Images



ARG80796 Chicken Egg White proteins ELISA Kit example of standard curve image

ARG80796 Chicken Egg White proteins ELISA Kit results of a typical standard run with optical density reading at 450 nm.