

ARG80809 Peanut ELISA Kit

Package: 96 wells
Store at: 4°C

Summary

Product Description	ARG80809 Peanut ELISA Kit is an enzyme immunoassay kit for the quantification of Peanut in food (extraction, dilution).
Tested Reactivity	Plnt
Tested Application	ELISA
Target Name	Peanut
Conjugation	HRP
Conjugation Note	Substrate: TMB and read at 450 nm
Sensitivity	0.1 ppm
Sample Type	Food (extraction, dilution).
Standard Range	1 - 40 ppm
Sample Volume	100 µl

Application Instructions

Assay Time	20, 20 min (RT), 20 min (RT/dark)
------------	-----------------------------------

Properties

Form	96 well
Storage instruction	Store the kit at 2-8°C. Keep microplate wells sealed in a dry bag with desiccants. Do not expose test reagents to heat, sun or strong light during storage and usage. Please refer to the product user manual for detail temperatures of the components.
Note	For laboratory research only, not for drug, diagnostic or other use.

Bioinformation

Gene Full Name	Peanut
Background	<p>Peanut (<i>Arachis hypogaea</i>) belongs to the legumes. With 25 % the fraction of proteins in peanuts is very high. Many of these proteins are known for being allergenic, such as Arachins and Conarachins which are contained in relative high amounts. For this reason peanut represents one of the most important food allergens. For peanut allergic persons hidden peanut allergens in food are a critical problem. Already very low amounts of peanuts can cause allergic reactions, which may lead to anaphylactic shock in severe cases. Because of this, peanut allergic persons must strictly avoid the consumption of peanuts or peanut containing food. Cross-contamination, mostly in consequence of the production process is often noticed. The chocolate production process is a representative example. This explains why in many cases the existence of peanut residues in foods cannot be excluded. For this reason sensitive detection systems for peanut residues in foodstuffs are required.</p> <p>The Peanut ELISA represents a highly sensitive detection system and is particularly capable of the quantification of peanut residues in cookies, cereals, ice cream and chocolate.</p>

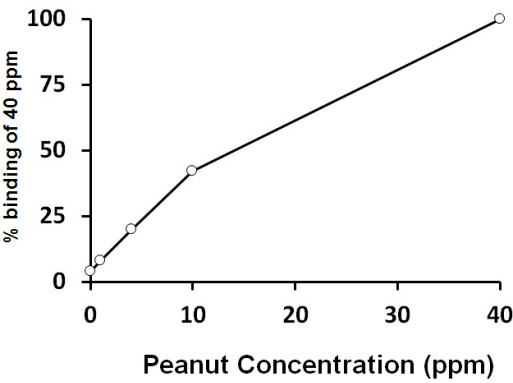
Highlight

Related products:
[Peanut antibodies](#); [Peanut ELISA Kits](#); [Peanut Duos / Panels](#);
New ELISA data calculation tool:
[Simplify the ELISA analysis by GainData](#)

Research Area

Immune System kit

Images



ARG80809 Peanut ELISA Kit standard curve image

ARG80809 Peanut ELISA Kit results of a typical standard run with optical density reading at 450nm.