

**ARG80812**  
**Sesame ELISA Kit**Package: 96 wells  
Store at: 4°C

### Summary

Product Description	Enzyme Immunoassay for the quantification of Sesame in food (extraction).
Tested Reactivity	Plnt
Tested Application	ELISA
Target Name	Sesame
Conjugation	HRP
Conjugation Note	Substrate: TMB and read at 450 nm
Sensitivity	0.2 ppm
Sample Type	Food (extraction).
Standard Range	2 - 30 ppm
Sample Volume	5 g or 1 ml

### Application Instructions

Assay Time	20, 20 min (RT), 20 min (RT/dark)
------------	-----------------------------------

### Properties

Form	96 well
Storage instruction	Store the kit at 2-8°C. Keep microplate wells sealed in a dry bag with desiccants. Do not expose test reagents to heat, sun or strong light during storage and usage. Please refer to the product user manual for detail temperatures of the components.
Note	For laboratory research only, not for drug, diagnostic or other use.

### Bioinformation

Gene Full Name	Sesame
Background	<p>Sesame belongs to the family of Pedaliaceae. With about 16-32% the fraction of proteins in sesame seed is very high. Some of these proteins, like the albumins Ses i 1 and Ses i 2 or the globulin Ses i 3 are known for being allergenic. Because of its wide- spread application possibilities, sesame is used in many food preparations.</p> <p>For sesame-allergic persons hidden sesame allergens in food are a critical problem. Already very low amounts of sesame can cause allergic reactions, which may lead to anaphylactic shock in severe cases. Because of this, sesame-allergic persons must strictly avoid the consumption of sesame containing food. Cross-contamination, mostly in consequence of the production process, is often noticed. This explains why in many cases the existence of sesame residues in food cannot be excluded. For this reason sensitive detection systems for sesame residues in foodstuffs are required.</p> <p>ARG80812 Sesame ELISA Kit represents a highly sensitive detection system for sesame and is particularly capable of the quantification of residues in bakery products, soups, sausage, sauces and ice</p>

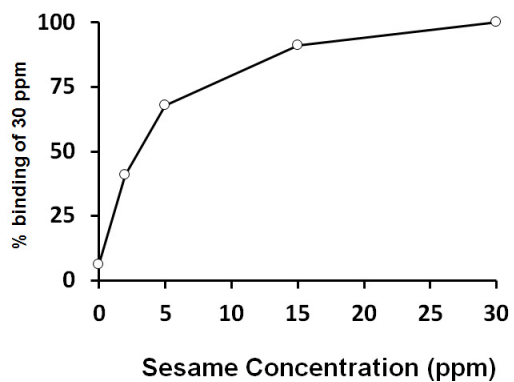
cream.

Resrarch Area

Immune System kit

## Images

---



ARG80812 Sesame ELISA Kit standard curve image

ARG80812 Sesame ELISA Kit results of a typical standard run with optical density reading at 450nm.