

## ARG80835 Human hCG beta (total) ELISA Kit

Package: 96 wells

Store at: 4°C

### Summary

Product Description	ARG80835 Human hCG beta (total) ELISA Kit is an enzyme immunoassay kit for the quantification of total human chorionic gonadotropin beta subunit (hCG and hCG beta) in serum.
Tested Reactivity	Hu
Tested Application	ELISA
Target Name	hCG beta (total)
Conjugation	HRP
Conjugation Note	Substrate: TMB and read at 450 nm
Sensitivity	1 mIU/ml
Sample Type	Serum.
Standard Range	5 - 200 mIU/ml
Sample Volume	25 µl
Alternate Names	hCGB; CGB5; CGB7; CGB3; Chorionic gonadotrophin chain beta; CGB8; CG-beta; Choriogonadotropin subunit beta

### Application Instructions

Assay Time	60, 15 min
------------	------------

### Properties

Form	96 well
Storage instruction	Store the kit at 2-8°C. Keep microplate wells sealed in a dry bag with desiccants. Do not expose test reagents to heat, sun or strong light during storage and usage. Please refer to the product user manual for detail temperatures of the components.
Note	For laboratory research only, not for drug, diagnostic or other use.

### Bioinformation

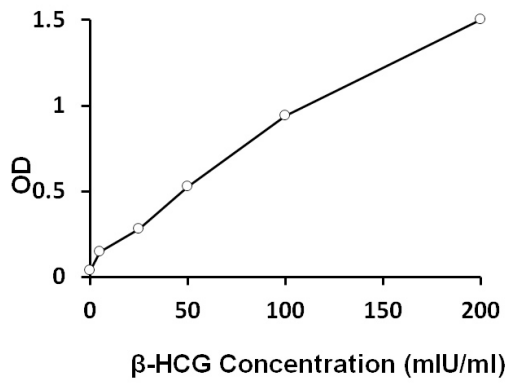
Database links	<a href="#">GeneID: 1082 Human</a> <a href="#">Swiss-port # P01233 Human</a>
Gene Symbol	CGB
Gene Full Name	chorionic gonadotropin, beta polypeptide
Background	This gene is a member of the glycoprotein hormone beta chain family and encodes the beta 3 subunit of chorionic gonadotropin (CG). Glycoprotein hormones are heterodimers consisting of a common alpha subunit and a unique beta subunit which confers biological specificity. CG is produced by the trophoblastic cells of the placenta and stimulates the ovaries to synthesize the steroids that are essential for the maintenance of pregnancy. The beta subunit of CG is encoded by 6 genes which are

arranged in tandem and inverted pairs on chromosome 19q13.3 and contiguous with the luteinizing hormone beta subunit gene. [provided by RefSeq, Jul 2008]

Function	Stimulates the ovaries to synthesize the steroids that are essential for the maintenance of pregnancy. [UniProt]
Research Area	Cancer kit; Metabolism kit; Signaling Transduction kit
Cellular Localization	Secreted. [UniProt]

## Images

---



ARG80835 Human hCG beta (total) ELISA Kit example of standard curve image

ARG80835 Human hCG beta (total) ELISA Kit results of a typical standard run with optical density reading at 450 nm.

---