

ARG80868 C5a ELISA Kit

Package: 2x96 wells
Store at: 4°C

Summary

Product Description	ARG80868 C5a ELISA Kit is an Enzyme Immunoassay kit for the quantification of Human, Rabbit, Pig and Rhesus Monkey C5a in plasma (EDTA, citrate) and urine.
Tested Reactivity	Hu, Pig, R. Mk, Rb
Species Does Not React With	Rat
Tested Application	ELISA
Target Name	C5a / Complement C5
Conjugation	HRP
Conjugation Note	TMB at 450 nm
Sensitivity	20 pg/ml
Sample Type	Plasma (EDTA, citrate) and urine.
Standard Range	0.1 - 10 ng/ml
Sample Volume	100 µl
Alternate Names	ECLZB; CPAMD4; Complement C5; C5D; C5b; C5a; C3 and PZP-like alpha-2-macroglobulin domain-containing protein 4

Properties

Form	96 well
Storage instruction	Store the kit at 2-8°C. Keep microplate wells sealed in a dry bag with desiccants. Do not expose test reagents to heat, sun or strong light during storage and usage. Please refer to the product user manual for detail temperatures of the components.
Note	For laboratory research only, not for drug, diagnostic or other use.

Bioinformation

Database links	GeneID: 727 Human Swiss-port # P01031 Human
Gene Symbol	C5
Gene Full Name	complement component 5
Background	The protein encoded by this gene is the fifth component of complement, which plays an important role in inflammatory and cell killing processes. This protein is comprised of alpha and beta polypeptide chains that are linked by a disulfide bridge. An activation peptide, C5a, which is an anaphylatoxin that possesses potent spasmogenic and chemotactic activity, is derived from the alpha polypeptide via cleavage with a convertase. The C5b macromolecular cleavage product can form a complex with the C6 complement component, and this complex is the basis for formation of the membrane attack complex, which includes additional complement components. Mutations in this gene cause complement component 5 deficiency, a disease where patients show a propensity for severe recurrent infections. Defects in this gene have also been linked to a susceptibility to liver fibrosis and to rheumatoid arthritis.

[provided by RefSeq, Jul 2008]

Function

Activation of C5 by a C5 convertase initiates the spontaneous assembly of the late complement components, C5-C9, into the membrane attack complex. C5b has a transient binding site for C6. The C5b-C6 complex is the foundation upon which the lytic complex is assembled.

Derived from proteolytic degradation of complement C5, C5 anaphylatoxin is a mediator of local inflammatory process. Binding to the receptor C5AR1 induces a variety of responses including intracellular calcium release, contraction of smooth muscle, increased vascular permeability, and histamine release from mast cells and basophilic leukocytes. C5a is also a potent chemokine which stimulates the locomotion of polymorphonuclear leukocytes and directs their migration toward sites of inflammation. [UniProt]

Highlight

Related products:

[Complement component antibodies](#); [Complement component ELISA Kits](#); [Complement component Duos / Panels](#);

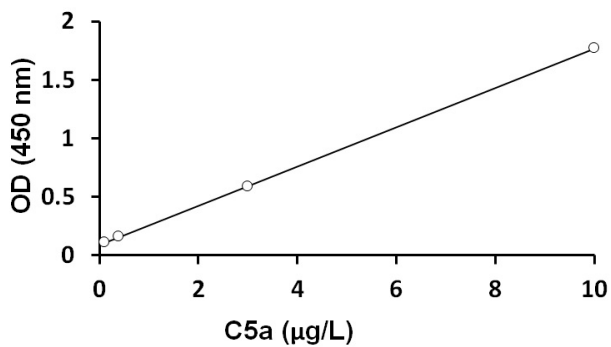
New ELISA data calculation tool:

[Simplify the ELISA analysis by GainData](#)

Research Area

Cell Biology and Cellular Response kit; Immune System kit; Metabolism kit; Signaling Transduction kit

Images



ARG80868 C5a ELISA Kit standard curve image

ARG80868 C5a ELISA Kit results of a typical standard run with optical density reading at 450nm.