

ARG80934 Neuropeptide Y ELISA Kit

Package: 96 wells
Store at: 4°C

Summary

Product Description	ARG80934 Neuropeptide Y ELISA Kit is an Enzyme Immunoassay kit for the quantification of Neuropeptide Y in blood collection, serum, plasma extraction, tissue extraction and CSF extraction.
Tested Reactivity	Hu, Ms, Rat, Pig
Tested Application	ELISA
Specificity	Cross reactivity: Neuropeptide Y (Human, Rat, Mouse): 100% Neuropeptide Y (Pig): 100% Neuropeptide Y (3-36) (Human, Rat, Mouse): 14.3% Peptide YY (Human): 0% Peptide YY (Rat, Mouse, Porcine, Canine): 0% Pancreatic Polypeptide (Human): 0% VIP (Human, Rat, Porcine): 0% Insulin (Human): 0% Amylin (Human): 0% Somatostatin (Human, Rat, Mouse, Porcine): 0%
Target Name	Neuropeptide Y
Conjugation	HRP
Sensitivity	0.09 ng/ml
Detection Range	0 - 100 ng/ml; linear range: 0.09 - 1.75 ng/ml
Sample Type	Blood collection, serum, plasma extraction, tissue extraction and CSF extraction.
Standard Range	0 - 100 ng/ml
Alternate Names	Pro-neuropeptide Y; Neuropeptide tyrosine; NPY; CPON; PYY4

Properties

Form	96 well
Storage instruction	Store the kit at 2-8°C. Keep microplate wells sealed in a dry bag with desiccants. Do not expose test reagents to heat, sun or strong light during storage and usage. Please refer to the product user manual for detail temperatures of the components.
Note	For laboratory research only, not for drug, diagnostic or other use.

Bioinformation

Gene Symbol	NPY
Gene Full Name	neuropeptide Y
Background	NPY gene encodes a neuropeptide that is widely expressed in the central nervous system and influences many physiological processes, including cortical excitability, stress response, food intake, circadian rhythms, and cardiovascular function. The neuropeptide functions through G protein-coupled receptors to inhibit adenylyl cyclase, activate mitogen-activated protein kinase (MAPK), regulate intracellular calcium levels, and activate potassium channels. A polymorphism in this gene resulting in a

change of leucine 7 to proline in the signal peptide is associated with elevated cholesterol levels, higher alcohol consumption, and may be a risk factor for various metabolic and cardiovascular diseases. The protein also exhibits antimicrobial activity against bacteria and fungi. [provided by RefSeq, Oct 2014]

Function NPY is implicated in the control of feeding and in secretion of gonadotrophin-release hormone. [UniProt]

Highlight New ELISA data calculation tool:
[Simplify the ELISA analysis by GainData](#)

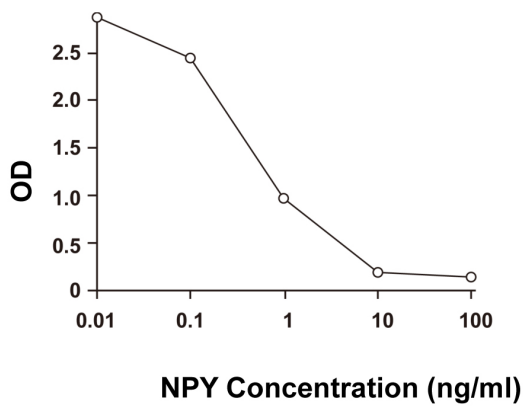
Related news:
[Studying obesity and appetite control by quantifying orexigenic and anorexigenic hormones;](#)

Related products:
[Neuropeptide antibodies;](#) [Neuropeptide ELISA Kits;](#)

Research Area Cell Biology and Cellular Response kit; Metabolism kit; Neuroscience kit

PTM The neuropeptide Y form is cleaved at Pro-30 by the prolyl endopeptidase FAP (seprase) activity (in vitro).

Images



ARG80934 Neuropeptide Y ELISA Kit standard curve image

ARG80934 Neuropeptide Y ELISA Kit results of a typical standard run with optical density reading at 450nm.