

ARG80972 Cholecystokinin 8, Octapeptide (non-Sulfated) ELISA Kit

Package: 96 wells
Store at: 4°C

Component

Cat. No.	Component Name	Package	Temp
ARG80972-001	Secondary antibody-coated microplate	1 plate (96 well)	4°C
ARG80972-002	Primary antibody	1 vial	4°C
ARG80972-003	Standard peptide	1 vial	4°C
ARG80972-004	Biotinylated peptide	1 vial	4°C
ARG80972-005	SA-HRP concentrate	30 µl	4°C
ARG80972-006	20X Assay buffer	50 ml	4°C
ARG80972-007	Positive control	2 vials	4°C
ARG80972-008	Diluent buffer	23 ml	4°C
ARG80972-009	TMB substrate	12 ml	4°C (Protect from light)
ARG80972-010	STOP solution (2N HCl)	13 ml	4°C
ARG80972-011	Plate sealer	3	RT

Summary

Product Description	ARG80972 Cholecystokinin 8, Octapeptide (non-Sulfated) ELISA kit is an Enzyme Immunoassay kit for the quantification of Human, Mouse and Rat Cholecystokinin 8, Octapeptide (non-Sulfated) in Blood collection.
Tested Reactivity	Hu, Ms, Rat
Tested Application	ELISA
Specificity	Cross Reactivity: CCK (26-33) (Non-Sulfated) (Human, Mouse, Rat): 100% Big Gastrin-1 (Human): 100% Caerulein: 100% CCK-33 (Porcine): 100% CCK (27-33): 100% Gastrin-1 (Human): 100% CCK-33 (Sulfated) (Human): 42.9% CCK (30-33): 12.8% CCK-33 (Non-Sulfated) (Human): 8% CCK (26-33) (Sulfated): 3.9% Pancreatic Polypeptide (Human): 0% VIP (Human, Porcine, Rat): 0%
Target Name	Cholecystokinin 8, Octapeptide (non-Sulfated)
A.A. Sequence	DYMGWMDF-NH2
Conjugation	HRP

Sensitivity	0.04 ng/ml
Detection Range	0.04 - 0.45 ng/ml
Sample Type	Blood collection
Standard Range	0 - 100 ng/ml
Sample Volume	50 µl
Alternate Names	CCK58; CCK12; CCK25; CCK7; CCK5; CCK18; CCK33; CCK8; CCK; 1-49; CCK39; Cholecystokinin

Application Instructions

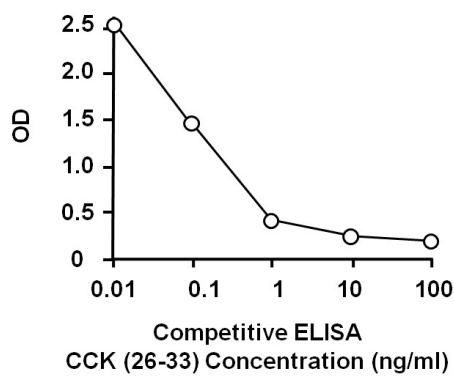
Assay Time	~ 4 hours
------------	-----------

Properties

Form	96 well
Storage instruction	Store the kit at 2-8°C. Keep microplate wells sealed in a dry bag with desiccants. Do not expose test reagents to heat, sun or strong light during storage and usage. Please refer to the product user manual for detail temperatures of the components.
Note	For laboratory research only, not for drug, diagnostic or other use.

Bioinformation

Gene Symbol	CCK
Gene Full Name	cholecystokinin
Background	Cholecystokinin is a brain/gut peptide. In the gut, it induces the release of pancreatic enzymes and the contraction of the gallbladder. In the brain, its physiologic role is unclear. The cholecystokinin pro-hormone is processed by endo- and exo-proteolytic cleavages. Two transcript variants encoding the same protein have been found for this gene. [provided by RefSeq, Mar 2010]
Function	This peptide hormone induces gall bladder contraction and the release of pancreatic enzymes in the gut. Its function in the brain is not clear. Binding to CCK-A receptors stimulates amylase release from the pancreas, binding to CCK-B receptors stimulates gastric acid secretion. [UniProt]
Highlight	<p>New ELISA data calculation tool: Simplify the ELISA analysis by GainData</p> <p>Related news: Therapeutic strategies against PDAC: Studying obesity and appetite control by quantifying orexigenic and anorexigenic hormones:</p> <p>Related products:</p>
Research Area	Metabolism kit; Signaling Transduction kit
PTM	The precursor is cleaved by proteases to produce a number of active cholecystokinins.



ARG80972 Cholecystokinin 8, Octapeptide (non-Sulfated) ELISA Kit standard curve image

ARG80972 Cholecystokinin 8, Octapeptide (non-Sulfated) ELISA Kit results of a typical standard run with optical density reading at 450 nm.