

## ARG81189 Rat alpha 2 Macroglobulin ELISA Kit

Package: 96 wells  
Store at: 4°C

### Summary

Product Description	ARG81189 Rat Alpha-2-Macroglobulin ELISA is an Enzyme Immunoassay kit for the quantification of Rat Alpha-2-Macroglobulin in serum, plasma, cell culture and urine.
Tested Reactivity	Rat
Tested Application	ELISA
Target Name	alpha 2 Macroglobulin
Conjugation	HRP
Conjugation Note	Substrate: TMB and read at 450 nm
Sensitivity	less than 0.1 ng/ml
Sample Type	Serum, plasma, cell culture and urine.
Standard Range	0.156 - 10 ng/ml
Sample Volume	50 µl
Alternate Names	CPAMD5; Alpha-2-macroglobulin; S863-7; FWP007; Alpha-2-M; A2MD; C3 and PZP-like alpha-2-macroglobulin domain-containing protein 5

### Application Instructions

Assay Time	~ 4 hours
------------	-----------

### Properties

Form	96 well
Storage instruction	Store the kit at 2-8°C. Keep microplate wells sealed in a dry bag with desiccants. Do not expose test reagents to heat, sun or strong light during storage and usage. Please refer to the product user manual for detail temperatures of the components.
Note	For laboratory research only, not for drug, diagnostic or other use.

### Bioinformation

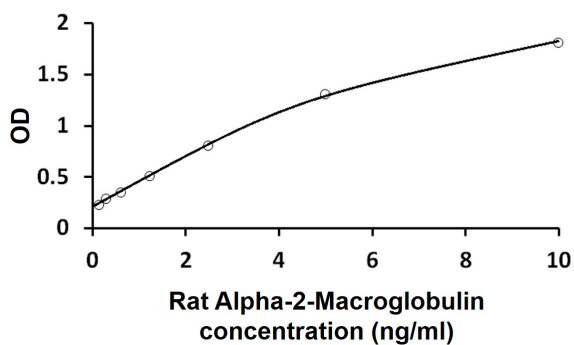
Database links	<a href="#">GeneID: 24153 Rat</a> <a href="#">Swiss-port # P06238 Rat</a>
Gene Symbol	A2m
Gene Full Name	alpha-2-macroglobulin
Background	Alpha-2-macroglobulin is a protease inhibitor and cytokine transporter. It inhibits many proteases, including trypsin, thrombin and collagenase. A2M is implicated in Alzheimer disease (AD) due to its ability to mediate the clearance and degradation of A-beta, the major component of beta-amyloid deposits. [provided by RefSeq, Jul 2008]

**Function** Is able to inhibit all four classes of proteinases by a unique 'trapping' mechanism. This protein has a peptide stretch, called the 'bait region' which contains specific cleavage sites for different proteinases. When a proteinase cleaves the bait region, a conformational change is induced in the protein which traps the proteinase. The entrapped enzyme remains active against low molecular weight substrates (activity against high molecular weight substrates is greatly reduced). Following cleavage in the bait region a thioester bond is hydrolyzed and mediates the covalent binding of the protein to the proteinase. [UniProt]

**Highlight** Related products:  
[alpha-2-Macroglobulin antibodies;](#) [alpha-2-Macroglobulin ELISA Kits;](#)  
New ELISA data calculation tool:  
[Simplify the ELISA analysis by GainData](#)

## Images

---



ARG81189 Rat Alpha-2-Macroglobulin ELISA Kit standard curve image

ARG81189 Rat Alpha-2-Macroglobulin ELISA Kit results of a typical standard run with optical density reading at 450 nm.