

## ARG81464 Human Klk6 / neurosin ELISA Kit

Package: 96 wells  
Store at: 4°C

### Component

Cat. No.	Component Name	Package	Temp
ARG81464-001	Antibody-coated microplate	8 X 12 strips	4°C. Unused strips should be sealed tightly in the air-tight pouch.
ARG81464-002	Standard	2 X 10 ng/vial	4°C
ARG81464-003	Standard/Sample diluent	30 ml (Ready to use)	4°C
ARG81464-004	Antibody conjugate concentrate (100X)	1 vial (100 µl)	4°C
ARG81464-005	Antibody diluent buffer	12 ml (Ready to use)	4°C
ARG81464-006	HRP-Streptavidin concentrate (100X)	1 vial (100 µl)	4°C
ARG81464-007	HRP-Streptavidin diluent buffer	12 ml (Ready to use)	4°C
ARG81464-008	25X Wash buffer	20 ml	4°C
ARG81464-009	TMB substrate	10 ml (Ready to use)	4°C (Protect from light)
ARG81464-010	STOP solution	10 ml (Ready to use)	4°C
ARG81464-011	Plate sealer	4 strips	Room temperature

### Summary

Product Description	ARG81464 Human Klk6 / neurosin ELISA Kit is an Enzyme Immunoassay kit for the quantification of Human Klk6 / neurosin in serum, plasma (heparin, EDTA) and cell culture supernatants.
Tested Reactivity	Hu
Tested Application	ELISA
Specificity	There is no detectable cross-reactivity with other relevant proteins.
Target Name	Klk6 / neurosin
Conjugation	HRP
Conjugation Note	Substrate: TMB and read at 450 nm.
Sensitivity	39 pg/ml
Sample Type	Serum, plasma (heparin, EDTA) and cell culture supernatants.
Standard Range	78 - 5000 pg/ml
Sample Volume	100 µl

Precision	Intra-Assay CV: 6.1% Inter-Assay CV: 7.2%
Alternate Names	PRSS18; Serine protease 9; Kallikrein-6; Klk7; hK6; Neurosin; Bssp; Protease M; EC 3.4.21.-; SP59; PRSS9; Zyme; Serine protease 18

## Application Instructions

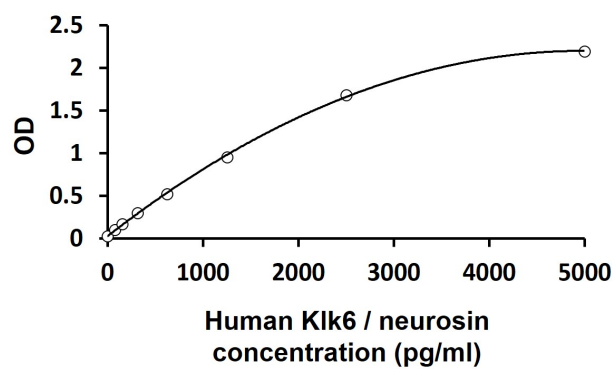
Assay Time	~ 5 hours
------------	-----------

## Properties

Form	96 well
Storage instruction	Store the kit at 2-8°C. Keep microplate wells sealed in a dry bag with desiccants. Do not expose test reagents to heat, sun or strong light during storage and usage. Please refer to the product user manual for detail temperatures of the components.
Note	For laboratory research only, not for drug, diagnostic or other use.

## Bioinformation

Gene Symbol	KLK6
Gene Full Name	kallikrein-related peptidase 6
Background	Kallikreins are a subgroup of serine proteases having diverse physiological functions. Growing evidence suggests that many kallikreins are implicated in carcinogenesis and some have potential as novel cancer and other disease biomarkers. This gene is one of the fifteen kallikrein subfamily members located in a cluster on chromosome 19. The encoded enzyme is regulated by steroid hormones. In tissue culture, the enzyme has been found to generate amyloidogenic fragments from the amyloid precursor protein, suggesting a potential for involvement in Alzheimer's disease. Multiple alternatively spliced transcript variants that encode different isoforms have been identified for this gene. [provided by RefSeq, Jul 2008]
Function	Serine protease which exhibits a preference for Arg over Lys in the substrate P1 position and for Ser or Pro in the P2 position. Shows activity against amyloid precursor protein, myelin basic protein, gelatin, casein and extracellular matrix proteins such as fibronectin, laminin, vitronectin and collagen. Degrades alpha-synuclein and prevents its polymerization, indicating that it may be involved in the pathogenesis of Parkinson disease and other synucleinopathies. May be involved in regulation of axon outgrowth following spinal cord injury. Tumor cells treated with a neutralizing KLK6 antibody migrate less than control cells, suggesting a role in invasion and metastasis. [UniProt]
Highlight	Related products: <a href="#">KLK antibodies</a> ; <a href="#">KLK ELISA Kits</a> ; <a href="#">KLK Duos / Panels</a> ; New ELISA data calculation tool: <a href="#">Simplify the ELISA analysis by GainData</a>
PTM	Inactivated by autolytic cleavage after Arg-80. [UniProt]



ARG81464 Human Klk6 / neurosin ELISA Kit standard curve image

ARG81464 Human Klk6 / neurosin ELISA Kit results of a typical standard run with optical density reading at 450 nm.