

ARG81494 Human CHI3L1 ELISA Kit

Package: 96 wells
Store at: 4°C

Component

Cat. No.	Component Name	Package	Temp
ARG81494-001	Antibody-coated microplate	8 X 12 strips	4°C. Unused strips should be sealed tightly in the air-tight pouch.
ARG81494-002	Standard	2 X 10 ng/vial	4°C
ARG81494-003	Standard/Sample diluent	30 ml (Ready to use)	4°C
ARG81494-004	Antibody conjugate concentrate (100X)	1 vial (100 µl)	4°C
ARG81494-005	Antibody diluent buffer	12 ml (Ready to use)	4°C
ARG81494-006	HRP-Streptavidin concentrate (100X)	1 vial (100 µl)	4°C
ARG81494-007	HRP-Streptavidin diluent buffer	12 ml (Ready to use)	4°C
ARG81494-008	25X Wash buffer	20 ml	4°C
ARG81494-009	TMB substrate	10 ml (Ready to use)	4°C (Protect from light)
ARG81494-010	STOP solution	10 ml (Ready to use)	4°C
ARG81494-011	Plate sealer	4 strips	Room temperature

Summary

Product Description	ARG81494 Human CHI3L1 ELISA Kit is an Enzyme Immunoassay kit for the quantification of Human CHI3L1 in serum, plasma (heparin, EDTA), urine and cell culture supernatants.
Tested Reactivity	Hu
Tested Application	ELISA
Specificity	There is no detectable cross-reactivity with other relevant proteins.
Target Name	CHI3L1
Conjugation	HRP
Conjugation Note	Substrate: TMB and read at 450 nm.
Sensitivity	31.25 pg/ml
Sample Type	Serum, plasma (heparin, EDTA), urine and cell culture supernatants.
Standard Range	62.5 - 4000 pg/ml
Sample Volume	100 µl

Precision	Intra-Assay CV: 5.0% Inter-Assay CV: 6.6%
Alternate Names	YYL-40; GP-39; ASRT7; YKL40; HC-gp39; HCGP-3P; GP39; Cartilage glycoprotein 39; CGP-39; Chitinase-3-like protein 1; hCGP-39; YKL-40; 39 kDa synovial protein

Application Instructions

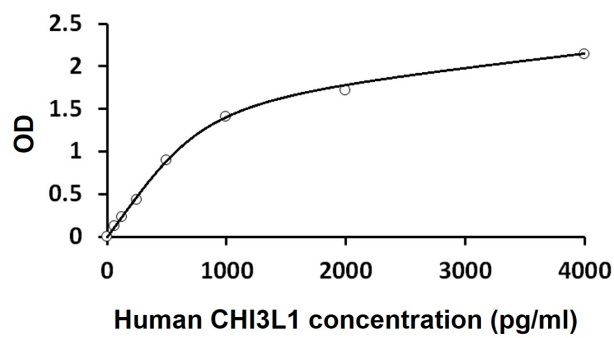
Assay Time	~ 5 hours
------------	-----------

Properties

Form	96 well
Storage instruction	Store the kit at 2-8°C. Keep microplate wells sealed in a dry bag with desiccants. Do not expose test reagents to heat, sun or strong light during storage and usage. Please refer to the product user manual for detail temperatures of the components.
Note	For laboratory research only, not for drug, diagnostic or other use.

Bioinformation

Gene Symbol	CHI3L1
Gene Full Name	chitinase 3-like 1 (cartilage glycoprotein-39)
Background	Chitinases catalyze the hydrolysis of chitin, which is an abundant glycopolymer found in insect exoskeletons and fungal cell walls. The glycoside hydrolase 18 family of chitinases includes eight human family members. This gene encodes a glycoprotein member of the glycosyl hydrolase 18 family. The protein lacks chitinase activity and is secreted by activated macrophages, chondrocytes, neutrophils and synovial cells. The protein is thought to play a role in the process of inflammation and tissue remodeling. [provided by RefSeq, Sep 2009]
Function	Carbohydrate-binding lectin with a preference for chitin. Has no chitinase activity. May play a role in tissue remodeling and in the capacity of cells to respond to and cope with changes in their environment. Plays a role in T-helper cell type 2 (Th2) inflammatory response and IL-13-induced inflammation, regulating allergen sensitization, inflammatory cell apoptosis, dendritic cell accumulation and M2 macrophage differentiation. Facilitates invasion of pathogenic enteric bacteria into colonic mucosa and lymphoid organs. Mediates activation of AKT1 signaling pathway and subsequent IL8 production in colonic epithelial cells. Regulates antibacterial responses in lung by contributing to macrophage bacterial killing, controlling bacterial dissemination and augmenting host tolerance. Also regulates hyperoxia-induced injury, inflammation and epithelial apoptosis in lung. [UniProt]
Highlight	Related products: CHI3L1 antibodies ; CHI3L1 ELISA Kits ; New ELISA data calculation tool: Simplify the ELISA analysis by GainData
PTM	Glycosylated. [UniProt]



ARG81494 Human CHI3L1 ELISA Kit standard curve image

ARG81494 Human CHI3L1 ELISA Kit results of a typical standard run with optical density reading at 450 nm.