

ARG81513 Human KLK11 ELISA Kit

Package: 96 wells
Store at: 4°C

Component

Cat. No.	Component Name	Package	Temp
ARG81513-001	Antibody-coated microplate	8 X 12 strips	4°C. Unused strips should be sealed tightly in the air-tight pouch.
ARG81513-002	Standard	2 X 10 ng/vial	4°C
ARG81513-003	Standard/Sample diluent	30 ml (Ready to use)	4°C
ARG81513-004	Antibody conjugate concentrate (100X)	1 vial (100 µl)	4°C
ARG81513-005	Antibody diluent buffer	12 ml (Ready to use)	4°C
ARG81513-006	HRP-Streptavidin concentrate (100X)	1 vial (100 µl)	4°C
ARG81513-007	HRP-Streptavidin diluent buffer	12 ml (Ready to use)	4°C
ARG81513-008	25X Wash buffer	20 ml	4°C
ARG81513-009	TMB substrate	10 ml (Ready to use)	4°C (Protect from light)
ARG81513-010	STOP solution	10 ml (Ready to use)	4°C
ARG81513-011	Plate sealer	4 strips	Room temperature

Summary

Product Description	ARG81513 Human KLK11 ELISA Kit is an Enzyme Immunoassay kit for the quantification of Human KLK11 in serum, plasma (heparin, EDTA) and cell culture supernatants.
Tested Reactivity	Hu
Tested Application	ELISA
Specificity	There is no detectable cross-reactivity with other relevant proteins.
Target Name	KLK11
Conjugation	HRP
Conjugation Note	Substrate: TMB and read at 450 nm.
Sensitivity	78 pg/ml
Sample Type	Serum, plasma (heparin, EDTA) and cell culture supernatants.
Standard Range	156 - 10000 pg/ml
Sample Volume	100 µl

Precision	Intra-Assay CV: 6.2% Inter-Assay CV: 7.3%
Alternate Names	Trypsin-like protease; Kallikrein-11; hK11; PRSS20; EC 3.4.21.-; Serine protease 20; TLSP; Hippostasin

Application Instructions

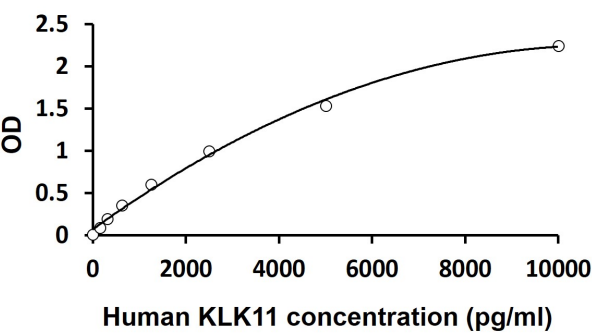
Assay Time	~ 5 hours
------------	-----------

Properties

Form	96 well
Storage instruction	Store the kit at 2-8°C. Keep microplate wells sealed in a dry bag with desiccants. Do not expose test reagents to heat, sun or strong light during storage and usage. Please refer to the product user manual for detail temperatures of the components.
Note	For laboratory research only, not for drug, diagnostic or other use.

Bioinformation

Gene Symbol	KLK11
Gene Full Name	kallikrein-related peptidase 11
Background	Kallikreins are a subgroup of serine proteases having diverse physiological functions. Growing evidence suggests that many kallikreins are implicated in carcinogenesis and some have potential as novel cancer and other disease biomarkers. This gene is one of the fifteen kallikrein subfamily members located in a cluster on chromosome 19. Alternate splicing of this gene results in multiple transcript variants encoding distinct isoforms which are differentially expressed.[provided by RefSeq, Nov 2009]
Function	Possible multifunctional protease. Efficiently cleaves 'bz-Phe-Arg-4-methylcoumaryl-7-amide', a kallikrein substrate, and weakly cleaves other substrates for kallikrein and trypsin. Cleaves synthetic peptides after arginine but not lysine residues. [UniProt]
Highlight	Related products: KLK antibodies ; KLK ELISA Kits ; KLK Duos / Panels ; New ELISA data calculation tool: Simplify the ELISA analysis by GainData
PTM	About 40% of KLK11 is inactivated by internal cleavage after Arg-188. This proteolytic inactivation may be effected by plasminogen. [UniProt]



ARG81513 Human KLK11 ELISA Kit standard curve image

ARG81513 Human KLK11 ELISA Kit results of a typical standard run with optical density reading at 450 nm.