

## ARG81995 Mouse CRLF2 ELISA Kit

Package: 96 wells  
Store at: 4°C

### Component

Cat. No.	Component Name	Package	Temp
ARG81995-001	Antibody-coated microplate	8 X 12 strips	4°C. Unused strips should be sealed tightly in the air-tight pouch.
ARG81995-002	Standard	2 X 10 ng/vial	4°C
ARG81995-003	Standard/Sample diluent	30 ml (Ready to use)	4°C
ARG81995-004	Antibody conjugate concentrate (100X)	1 vial (100 µl)	4°C
ARG81995-005	Antibody diluent buffer	12 ml (Ready to use)	4°C
ARG81995-006	HRP-Streptavidin concentrate (100X)	1 vial (100 µl)	4°C
ARG81995-007	HRP-Streptavidin diluent buffer	12 ml (Ready to use)	4°C
ARG81995-008	25X Wash buffer	20 ml	4°C
ARG81995-009	TMB substrate	10 ml (Ready to use)	4°C (Protect from light)
ARG81995-010	STOP solution	10 ml (Ready to use)	4°C
ARG81995-011	Plate sealer	4 strips	Room temperature

### Summary

Product Description	ARG81995 Mouse CRLF2 ELISA Kit is an Enzyme Immunoassay kit for the quantification of Mouse CRLF2 in serum, plasma (heparin, EDTA) and cell culture supernatants.
Tested Reactivity	Ms
Tested Application	ELISA
Specificity	There is no detectable cross-reactivity with other relevant proteins.
Target Name	CRLF2
Conjugation	HRP
Conjugation Note	Substrate: TMB and read at 450 nm.
Sensitivity	62.5 pg/ml
Sample Type	Serum, plasma (heparin, EDTA) and cell culture supernatants.
Standard Range	125 - 8000 pg/ml
Sample Volume	100 µl

Precision	Intra-Assay CV: 6.9%; Inter-Assay CV: 7.5%
Alternate Names	CRL2; Cytokine receptor-like 2; Cytokine receptor-like factor 2; Thymic stromal lymphopoietin protein receptor; TSLP receptor; TSLPR; IL-XR; CRLF2Y

## Application Instructions

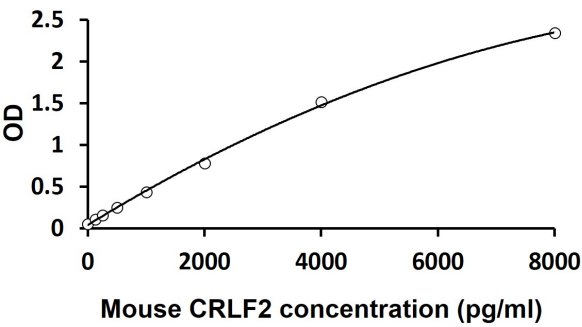
Assay Time	~ 5 hours
------------	-----------

## Properties

Form	96 well
Storage instruction	Store the kit at 2-8°C. Keep microplate wells sealed in a dry bag with desiccants. Do not expose test reagents to heat, sun or strong light during storage and usage. Please refer to the product user manual for detail temperatures of the components.
Note	For laboratory research only, not for drug, diagnostic or other use.

## Bioinformation

Gene Symbol	CRLF2
Gene Full Name	cytokine receptor-like factor 2
Background	This gene encodes a member of the type I cytokine receptor family. The encoded protein is a receptor for thymic stromal lymphopoietin (TSLP). Together with the interleukin 7 receptor (IL7R), the encoded protein and TSLP activate STAT3, STAT5, and JAK2 pathways, which control processes such as cell proliferation and development of the hematopoietic system. Rearrangement of this gene with immunoglobulin heavy chain gene (IGH) on chromosome 14, or with P2Y purinoceptor 8 gene (P2RY8) on the same X or Y chromosomes is associated with B-progenitor acute lymphoblastic leukemia (ALL) and Down syndrome ALL. Alternatively spliced transcript variants have been found for this gene. [provided by RefSeq, Sep 2014]
Function	Receptor for thymic stromal lymphopoietin (TSLP). Forms a functional complex with TSLP and IL7R which is capable of stimulating cell proliferation through activation of STAT3 and STAT5. Also activates JAK2 (By similarity). Implicated in the development of the hematopoietic system. [UniProt]
Highlight	Related products: <a href="#">CRLF2 antibodies</a> ; <a href="#">CRLF2 ELISA Kits</a> ; New ELISA data calculation tool: <a href="#">Simplify the ELISA analysis by GainData</a>



ARG81995 Mouse CRLF2 ELISA Kit standard curve image

ARG81995 Mouse CRLF2 ELISA Kit results of a typical standard run with optical density reading at 450 nm.